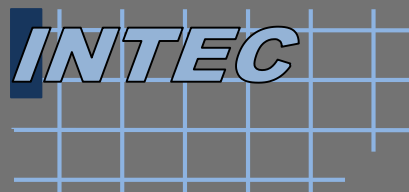


2018

BUSINESS DOSSIER

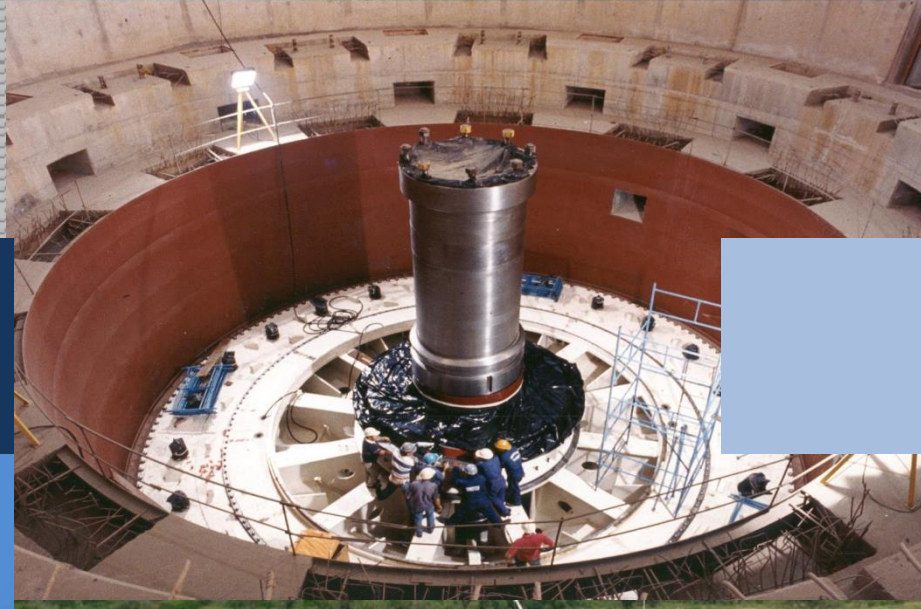
INTEC S.A.

INGENIEROS CONSULTORES DE ESTUDIOS Y PROYECTOS



Charles de Gaulle N°1575 c/ Choferes del Chaco
Tel/Fax: 021 600 708 Email: intecpy@gmail.com

REVIEW



INTEC, founded in 1973, is one of the first Paraguayan Civil Engineering firms, provider of technical services and advice for both public and private entities, with a Staff of more than 45 senior technicians of high qualification and experience.

The Company is recognized internationally for its participation in the works of the two large Binational Hydroelectric plants faced by Paraguay, ITAIPU, with Brazil and YACYRETÁ with Argentina.

The INTEC intervention in Yacyretá's work ranged from the elaboration of the project of the main work and of the electromechanical installations as well as the complementary works, the Management and Administration of Systems and the Control of Works.

The Consultant, in addition, has diversified into different fields, such as: Airports, Ports, Industrial Plants, Geological Studies, Electromechanical Equipment, Environmental Protection, Defenses against Floods, Qualification of Road Companies, Large Systems of Drinking Water Supply - Sanitary Sewer and Waste Treatment, Road Engineering Projects.

Currently maintains its high technology services with advanced equipment, systems georeferenced and the constant qualification of its human resources.

BACKGROUND

OF THE COMPANY



PROJECT DETAIL AND AUDIT OF WORKS OF THE YACYRETÁ HYDROELECTRIC

Contractor: BANKING ENTITY YACYRETÁ
Contract: Project of Detail and Direction and Control of Work of the Yacyretá Project
Contract amount: 250,000,000 US \$
Period: Years 1979/2003

HYDROELECTRIC POWER FROM THE ARM ANA CUA

Contractor: BANKING ENTITY YACYRETÁ
Contract: Hydroelectric Power Plant of the Arm Aña Cua
Contract amount: 5,237,774 U \$ S
Period: January 1999 - December 2002

CONTROL OF PAVING WORKS

Contractor: MINISTRY OF PUBLIC WORKS AND COMMUNICATIONS
Contract: Inspection of the Construction of Paving Works in the Road Network. Package 3 en
Contract amount: 1,694,600 U \$\$
Period: December 2012
Consortium: Intec S.A - Icasa

PORT OF ENCARNATION

Contractor: BANKING ENTITY YACYRETÁ
Contract: Puerto de Encarnación Project with Projection for the Year 2030
Contract amount: 1,600,000 US \$
Period: Year 1979
Consortium: ETIC

STRATEGIC PLAN FOR LIFTING OF PACKAGING AT A DEFINITIVE PROJECT LEVEL - PEY

Contractor: BANKING ENTITY YACYRETÁ
Contract: Strategic Plan for the construction of a reservoir at the definitive level of the Project - PEY
Contract amount: 1,504,068 US \$
Period: March 2001 to October 23, 2003

METALLIC TANKS AND FLOATING AND UNLOADING UNITS OF TRUCKS AND FLUVIAL VESSELS

Contractor: PETRÓLEO PARAGUAYOS - PETROPAR
Contract: Metallic Tanks for Storage of LPG, Fuels and Facilities for Loading and Unloading of Trucks and Operations of Discharge of Fluvial Vessels
Contract amount: \$ 1,260,529
Amount of the work: US \$ 14,000,000
Period: 1994 to 1996
Consortium: ELECTROMON-INTEC S.R.L.

RAILROAD PDTE. AC LÓPEZ

Contractor: BANKING ENTITY YACYRETÁ
Contract: Railway Relocation Project Carlos A. López -
General Excavation Artigas - Encarnación 76 km.
Contract amount: 1,200,000 US \$
Period: Years 1976/78
Consortium: ETIC

PROJECT OF THE RAILWAY STATION OF INCARNATION CHARGES

Contractor: BANKING ENTITY YACYRETÁ
Contract:
Contract amount: 100,000 U \$ S
Period: 1979 - 1980
Consortium: ETIC

PROJECT OF THE RAILWAY BORDER CONTROL POSITION IN PACU CÚA

Contractor: BANKING ENTITY YACYRETÁ
Contract:
Contract amount: 100.000 U\$S
Period: 1980 - 1981
Consortium: ETIC

PROJECT OF RAILWAY STATION OF INCARNATION PASSENGERS

Contractor: BANKING ENTITY YACYRETÁ
Contract: Fram Passenger Station
Contract amount: 50.000 U\$S
Period: 1978 - 1979
Consortium: ETIC

VILLA PERMANENT PARAGUAYA

Contractor: BANKING ENTITY YACYRETÁ
Contract: Executive Project of Permanent Villa Infrastructure
Paraguayan
Contract amount: 1,135,000 US \$
Period: Years 1975/76
Consortium: CEPAYA

THE AIRPORT OF ENCARNACIÓN

Contractor: BANKING ENTITY YACYRETÁ
Contract: Project Encarnación Airport - Track of 2,800 meters.
Contract amount: \$ 960,000
Period: Year 1979
Consortium: ETIC

VILLA PERMANENT, AYOLAS - FISCALIZATION OF WORKS

Contractor: BANKING ENTITY YACYRETÁ
Contract: Project for the Inspection of Infrastructure Works carried out in the Permanent Village of Ayolas
Contract amount: \$ 950,000
Period: Year 1982
Consortium: ARPAYA

VILLA PERMANENTE, AYOLAS

WORKS INSPECTION

Contractor: BANKING ENTITY YACYRETÁ
Contract: Project for the Control of Infrastructure Works, carried out in the Permanent Village of Ayolas.
Contract amount: \$ 950,000
Period: 1982

METALLIC TANKS FOR PETROPAR

Contractor: PETRÓLEO PARAGUAYOS - PETROPAR
Contract: Planning, administration and control of execution of the project of metallic tanks for storage of fuels
Inspection of manufacture and assembly
Contract amount: \$ 800,000
Amount of the work: \$ 4,000,000
Period: 1996 to 1998
Consortium: Electromon-Intec SRL

PROJECT OF THE FACULTY OF MEDICAL SCIENCES

Contractor: NATIONAL UNIVERSITY OF ASUNCION
Contract: Consulting Services for the Development of the Project of the Future Headquarters of the Faculty of Medical Sciences
Contract amount: 573,400 U \$\$
Period: November 2012 - December 2012
Consortium: Inkap

WORKS OF THE CUENCA DEL ARROYO TACUARY

Contractor: BANKING ENTITY YACYRETÁ
Contract: Review and update of the Projects foreseen by EBY in Carmen del Paraná
Contract amount: \$ 538,667
Period: March 23, 2001 to January 23, 2003

ENGINEERING PROJECT

Contractor: MINISTRY OF PUBLIC WORKS AND COMMUNICATIONS
Contract: Consulting Services for the Realization of Engineering Studies of the section: San Pedro - Piri Pucu - Potrero Naranja - Punta Riel and Access to Puerto Ybapovo
Contract amount: 390,072 U \$\$
Period: November 2012 - September 2013
Consortium: Punta Riel

PROJECT FOR THE EXPANSION OF AIRPORT INFRASTRUCTURE

Contractor: NATIONAL DIRECTORATE OF CIVIL AERONAUTICS
Contract: "Contracting of Consulting Services for Development of Expansion of Airport Infrastructure - AISP "
Contract amount: 334.111 U \$\$
Period: April 2012 - November 2012
Consortium: Inkap

ENGINEERING PROJECT

Contractor: SECRETARY OF NATIONAL EMERGENCY
Contract: Engineering studies for the defense against floods of Alto Paraguay and Pdte. There is
Contract amount: \$ 250,000
Period: September 2011 - November 2011
Consortium: Intec S.A.

ENGINEERING PROJECT

Contractor: MINISTRY OF PUBLIC WORKS AND COMMUNICATIONS
Contract: Engineering Studies for paving type Stretching sections: Package 2: Yabebyry - Santa Rita
Contract amount: 240,350 U \$\$
Period: June 2011 - February 2012
Consortium: Punta Riel

COASTAL DEFENSE IN PILAR AND CONCEPCIÓN

Contractor: INSTITUTE OF MUNICIPAL DEVELOPMENT-IDM
Contract: Executive Project of the Coastal Defense in the Cities of Pilar, Antequera and Concepción
Contract amount: 230,000 U \$ S
Period: 1987
Consortium: Architecture and Engineering and Associates
m:

POTABLE WATER SUPPLY SYSTEM

Contractor: NATIONAL SERVICE OF ENVIRONMENTAL SANITATION - SENASA
Contract: Consulting Services: Supervision of Works of Potable Water Supply Systems in 48 Locations.
Contract amount: 222,749 U \$\$
Period: April 2006 to the present

FRAM PASSENGER STATION

Contractor: BANKING ENTITY YACYRETÁ
Contract: Fram Passenger Station
Contract amount: \$ 200,000
Period: 1978 - 1979
Consortium: ETIC

ABSOLUTE ALCOHOL PLANT OF THE APAL IN MAURICIO JOSÉ TROCHE

Contractor: APAL
Contract: Advice on structural engineering and Sanitary Engineering to the Consultora Monitor S.A. Construction supervision
Contract amount: 160,000 USD
Period: Years 1981
Amount of the works : 18,000,000 U \$ S.
Consortium: Associated with the Consultant MONITOR S.A.

ENGINEERING PROJECT

Contractor: MINISTRY OF PUBLIC WORKS AND COMMUNICATIONS
Contract: Elaboration of Engineering Studies of Several Sections of Neighborhood Roads of the Eastern Region - Ad Referendum to the Plan Financial, Package 5.
Contract amount: 155,500 U \$\$
Period: December 2012 - August 2013
Consortium: Geocon - Intec

ITAIPU HYDROELECTRIC PROJECT

Contractor: BINATIONAL ENTITY ITAIPU
Contract: Diagnostic Study of the ITAIPU Hydroelectric Project
Contract amount: 150,000 USD
Period: Years 1969/72
Consortium: Geotechnical S.A. from Brazil

CONSOLIDATION OF RURAL COLONIES

Contractor: General Directorate of National Service - SENASA
Contract: Project to consolidate, control, plan and control the construction of civil works components of drinking water systems in rural neighborhoods - IDB Loans N ° 694 / OC-PR and N ° 891 / SF-PR
Contract amount: \$ 145,650
Period: 1996 to 1997

INSPECTION OF LIBRARY AND CENTRAL ARCHIVE

Contractor: NATIONAL CONGRESS
Contract: Inspection Service of Construction Works of the Library and Central Archive of the National Congress
Contract amount: 123,192 U \$\$
Period: March 2011
Consortium: Intec S.A.

ENGINEERING PROJECT

Contractor: MINISTRY OF PUBLIC WORKS AND COMMUNICATIONS
Contract: Final engineering design for asphalt paving of the section "Curuguaty - Villa Ygatimi - Ype Jhu"
Contract amount: 115,540 U \$\$
Period: October 2011 - May 2012
Consortium: Punta Riel

PLANTA MEZCLADORA DE FERTILIZANTES – FERTIPAR

Contractor: MINISTRY OF AGRICULTURE AND LIVESTOCK
Contract: Executive Project of a Fertilizer Mixing Plant
Contract amount: \$ 98,000
Period: 1990 to 1991

POTABLE WATER SUPPLY SYSTEM

Contractor: NATIONAL SERVICE OF ENVIRONMENTAL SANITATION - SENASA
Contract: Consulting Services: Inspection of the Construction of the Integrated Drinking Water Supply System with participation of the Private Sector for Nanawa, Puerto Falcón, Beterete Cué and Chaco
Contract amount: \$ 96,000
Period: August 2004 - August 2005

WATER SYSTEM EXTENSION

Contractor: CONSORTIUM OF CONSTRUCTION COMPANIES
Contract: Planning, supervision and quality control for the expansion of Asunción's drinking water system - CORPOSANA
Contract amount: \$ 82,000
Period: 1992 to 1993

PLANT OF TREATMENT FOR DRINKING WATER

Contractor: KAPPA S.R.L.
Contract: Preparation of Water Treatment Plant projects
Drinking in Rural Areas
Contract amount: \$ 80,000
Period: August of 1994 to March of 1995
Amount of Works: 1,345,664 US \$

DRINKING WATER IN DEPARTMENTS OF BORDER

Contractor: General Directorate of National Service - SENASA
Contract: Preparation of projects for drinking water supply systems in border departments. Projects with Underground and Surface Source
Contract amount: \$ 62,000
Period: August to October 2000

SANITARY SEWER SYSTEM OF THE CITY OF ITA

Contractor: CONSORTIUM OF CIVIL AND HYDRAULIC CONSTRUCTIONS
Contract: Design of the components of the sanitary sewer system and economic pre-feasibility study
Contract amount: \$ 17,000
Period: February to May 2000

BUILDING HEADQUARTERS OF THE CENTRAL DINAC

Contractor: NATIONAL DIRECTORATE OF CIVIL AERONAUTICS
Contract: For the Contracting of Consulting Services for the Elaboration of the Executive Project of the Headquarters building of the DINAC
Contract amount: 925,512,500 Gs
Period: May 2013

TOLERANCES STATIONS

Contractor: M & T S.A.
Contract: Executive Project for the Civil Works of 9 Station of Tolls in the Eastern Region of Paraguay
Contract amount: 87,554,875 Gs
Period: September 2013 In Execution

FISCALIZATION OF WIRING FOR MOUNTING AERIAL AND UNDERGROUND TELEPHONE NETWORKS

Contractor: REDTEL Consortium
Contract: Executive Project Development, Quality Control and Wiring Control for the Assembly of Aerial and Underground Telephone Networks for the Expansion and Re-adaptation of the Plant of COPACO
Contract amount: 555,670,000 Gs
Period: May 2007

Executive Project Development, Construction Management and Quality Control for the Construction of the Port Terminal

Contractor: CONSORTIUM M & T CONSTRUCTION -ING. ISOLA VALLEJOS
Contract: Development of Executive Project, Construction Management and Quality Control for the Construction of the Port Terminal for Fuel for the South Pier
Contract amount: 875,000,000 Gs
Period: May 2002

Executive Project, Construction Management and Quality Control for the Construction of the

Contractor: CONSORTIUM M & T CONSTRUCTION -ING. ISOLA VALLEJOS
Contract: Executive Project, Construction Management and Quality Control for the Construction of the Port Terminal of Fuel for the Central Pier
Contract amount: 950,000,000 Gs
Period: March 2002- September 2003

Social Promotion and Distribution of materials for Construction sanitary latrines

Contractor: SENASA
Contract: "Social Promotion and Distribution of materials for the Construction of 5268 sanitary latrines "
Contract amount: 2,888,251,000Gs US \$ 627,880
Period: July 2007 / February 2009

Revision and Final Designs for the Construction of the Project and Preparation of the Engineering Plans

Contractor:	ROAD ENGINEERING CONSORTIUM
Contract:	COMPREHENSIVE MANAGEMENT - REVISION AND FINAL DESIGNS FOR THE CONSTRUCTION OF THE PROJECT AND DEVELOPMENT OF THE PLANS OF THE ENGINEERING OF DETAIL OF THE WORK: "REHABILITATION AND PAVEMENT OF THE WALKWAY SECTION: PARAGUARI - TEBICUARY". (59 km)
Contract amount:	1,250,000,000 Gs
Period:	2004/2011

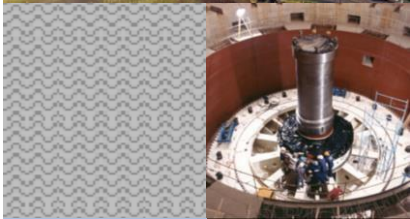
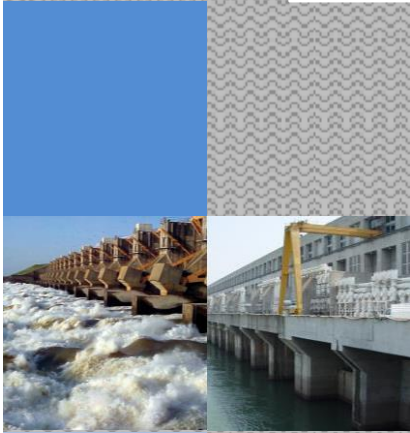
Review of the Project and Preparation of the Detailed Engineering Plans of the Work

Contractor:	ROAD ENGINEERING CONSORTIUM
Contract:	REVISION OF THE PROJECT AND DEVELOPMENT OF THE PLANES OF THE ENGINEER OF DETAIL OF THE WORK "REHABILITATION AND PAVEMENT OF THE WALKWAY TRACK VILLARICA-TEBICUARY-LA COLMENA (62KM)
Contract amount:	1,000,000,000 Gs
Period:	2004/2011

Integral Management of Project Engineering Services

Contractor:	COASTAL CONSORTIUM
Contract:	INTEGRAL MANAGEMENT OF THE INGENIERAL SERVICES OF THE PROJECT FOR THE ROAD WORKS IN THE REPUBLIC OF PARAGUAY CORRESPONDING TO THE PTY (PLAN OF ENVALSE) ETAPAI - PACKAGE A IN THE AREAS OF INFLUENCE OF THE ROUTES I AND VI.
Contract amount:	5,705,000,000 Gs

WORKS



1. MAIN CIVIL WORKS AND COMPLEMENTARY WORKS

Contract amount: US \$ 201,538,897 (at JUN / 93 prices)
Participation of the ETIC CONSORTIUM: U \$ \$ 57,199,793
Participation of INTEC S.A. in the turnover of ETIC: U \$ \$ 5,965,997
Period between the years 1979 and 2003

1.1 CIVIL WORKS:

Description of the services provided:

- Elaboration of the Executive Project of the following Works that totaled an amount of U \$ S 1.60,500,000:
 - A Loose Material Dam (64.7 km long, approximately 66,000,000 m³ of material placed loose and rock)
 - A Hydroelectric Plant for 20 Generating Units (approximately 1,900,000 m³ of concrete placed, 10,000,000 m³ excavated in the ground and 1,290,000 m³ excavated in rock)
 - Two Landfills: Main Arm (flow of 55,000 m³ / sec, 18 spans, approximately 443,000m³ of concrete placed, 5,750,000 m³ excavated in soil and 660,000m³ excavated in rock) and Braña Aña Cuá (flow 40,000m³ / sec, 16 bays, approximately 410,000m³ of concrete placed, 5,100,000 m³ excavated in soil and 685,000 m³ excavated in rock)
 - Una Esclusa de Navegación (Longitud 270m, ancho 27m, aproximadamente 557.000 m³ de Hormigón colocados, 1.835.000 m³ de excavación en suelo, 1.530.000 m³ de excavación en roca y 1.400.000 de relleno de material suelto)
 - 2 Takes for Irrigation, a Drainage Channel, Asphalt Pavement Road to elevation, 2 Facilities for Fish Transfer
- Preparation of the Technical - Contract Documents and inspection of the Contracts of Topographic Surveys and Geological Investigation - Geotechnical, Seismic, Materials, prior to the preparation of the Project.
- Preparation of the Technical - Contract Documents, Reports on the Offers submitted for the execution of the Contract and Advice to EBY until the signing of the Contract for the construction of the Works.
- Construction supervision and supervision during construction.
- Elaboration of the Construction Plans during the execution of the Works and review of the Detail Plans and Calculation Worksheets prepared by the Contractor from the Construction Plans.

Aña Cuá ARM Landfill



Head Arm Weir



Dam of Materials



Navigation Lock - Aerial View



Hydroelectric power station



1.2 DEFLECTORS FROM THE WASTE MAIN ARM

Services rendered in the period Years 1999 to 2003.

Elaboration of the Executive Project totalizing works for an amount of US \$ 2,500,000 (at prices of Oct / 2000), including.

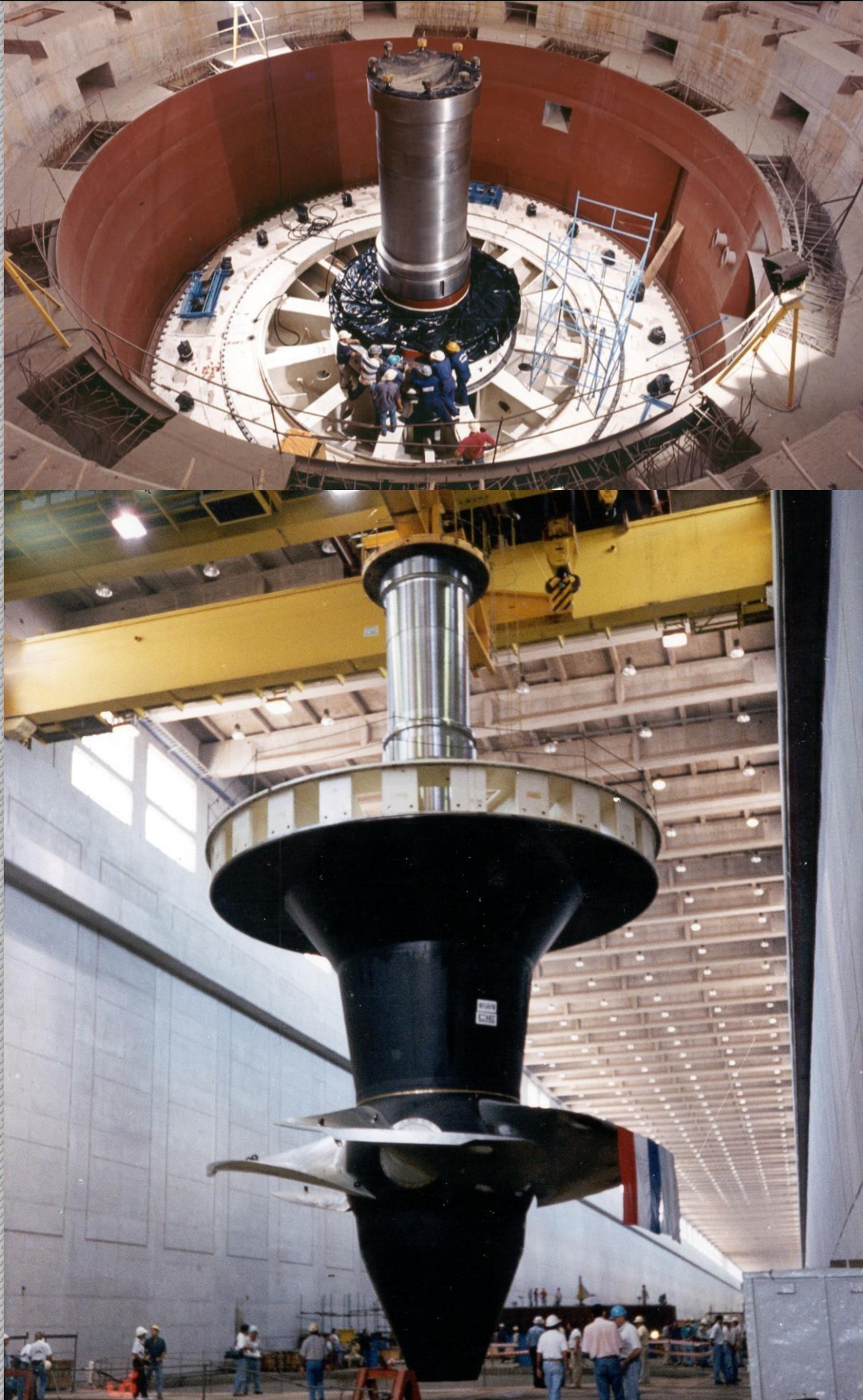
- Armored Concrete Volume of 3,600 m³.
- Preparation of the Technical - Contract Documents for the call for International Public Bidding, Reports on the Offers submitted and Advice to the Client until the signing of the Contract.
- Construction supervision and supervision during construction. Review of the Detail Plans prepared by the Contractor.
- Auscultation of Dams and Concrete Structures
- Administration of the Contract until Provisional Reception.

1.3 ELECTROMECHANICAL EQUIPMENT for a maximum power of 3,200 MW at a cost total of US \$ 991,500,000.

The consulting services provided covered the 1980-2003 period and were:

- Elaboration of the Executive Project, of the following Installations:
 - 20 Turbines of 160 MW and 20 Generators of 172.5 MVA
 - Bridges Cranes of the Central
 - Cranes Gantry of the Central
 - Facilities for Fish Transfer
 - Gates, Coffers and Grates of the Central and Landfills
 - Main Transformers, Isolated Bars and Auxiliary Services
 - 500 KV installations in SF₆
 - Automation and Computer Control System
 - Electromechanical Equipment of the Lock
 - Central Plant Cleaning Machine, Additional Facilities for Margin Fishes
 - Right and Left Bank of the Plant and Pumps for the Transfer of Fish
- Preparation of the Technical - Contract Documents and advice to the Client until the signing of Contracts with the Contractor.
- Review of the Details Plans and Calculation Worksheets prepared by the Contractor.
- Management and Control of Work and administration of Contracts for the manufacture and assembly until the definitive reception of the works.
- Technical Assistance for Start-up, Operation and Maintenance.

View of the Turbines



1.4 ANALYSIS OF THE INTERRELATION OF THE YACYRETÁ PACKAGING AND THE YERRA YELLOWS

- Analysis and evaluation of the Regional Macro Hydrogeological Study and Preparation of the Research and Monitoring.
- Preparation of the Technical Specifications Sheet and evaluation of Offers for execution of geophysical research drilling and pumping tests in Puerto Valle.
- Monitoring of groundwater levels Inspection in the field of the execution of drilling in Puerto Valle.

1.5 MASSAGE AND CATASTRO AND GEOTECHNICAL INVESTIGATION OF THE ZONES AFFECTED BY THE YACYRETÁ EMBALSE.

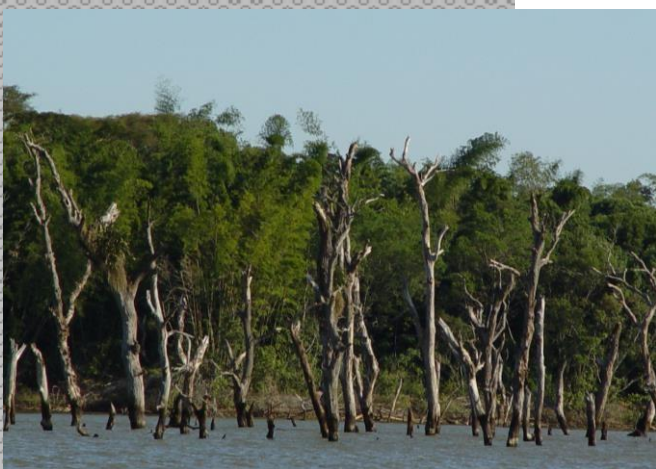
- Preparation of the Technical - Contract Documents for the Adjudication of the technical works in the field and legal in the cabinet.
- Technical-legal supervision of the work executed by the Contractor in the field and in the cabinet.

1.6 WORK RELATED TO THE ENVIRONMENT

Period between the years 1980 and 2000

- Alternative Solutions of the Arm Aña Cuá
- Agricultural Study of Arroyos San Martín, Caraguatá and Tacuary.
- Study on the weeding of the Yacyretá Project Reservoir.
- Analysis and effects of the Flood and deforestation
- Report on Fish Transfer during the Migration Period
- Operation at Reduced Elevation, Levels of the Yacyretá Reservoir during the different Stages of Construction.
- Preliminary Environmental Review on the Environmental Impact of Environmental Protection Works
- Arroyo Aguapey.
- Effects of Overexpression of Gases in the Water of the Paraná River - Report on dead fish detected below the Yacyretá Dam area
- Incorporation of Deflectors-Hydraulic Model Bracero Aña Cuá.
- Embalse Operation Manual. - Barriers Against Floating Elements
- Ictícola fauna management - Impact Measures. Alternatives for Mitigation of Impacts due to reduction of the flow of the Arm Aña Cuá.

Image of the Reservoir Area



Icicle Fauna

Fish culture

2. HYDROELECTRIC POWER PLANT OF THE ARM AÑA CUÁ

Billed Amount: U \$ S 5,237,774 (at JUN / 93 values)

Duration: January 1999 to December 2002

Participation of the ETIC CONSORTIUM: U \$ S 1,713,235

Participation of INTEC S.A. in the billing of the ETIC CONSORTIUM: U \$ S 178,692

The services included:

- Feasibility Study for an Additional Generation plant in the Aña Arm located in Isla Yacyretá, Design, calculation and Modulation memories Mathematics of the Arm Aña Cuá
- Executive and Detail Project of the civil works and electromechanical equipment of the plant with 3 kaplan turbines and an approximate power of 270 MW, up to 18.3 m of hydraulic jump and a flow of 1,500 m³ / sec approximately
- Incorporation of a Fish Transfer System
- Study of alternatives for cutting the dam with reservoir at level 76 and 78
- Preparation of the Technical Contract Documents for the Pre-selection of Offers, Reports on the Offers submitted and Advice to the Client until the definition of the Preselected Bidders.
- Studies and Evaluation on Ecological Considerations. Technical analysis, ecological, economic and financial alternative profitability.
- Bidding Documents for the Facilities for the Transfer of Fish from the Hydroelectric Power Plant of the Arm Aña Cuá.
- Environmental Impact Assessment for the construction and operation of the Arm of Hidroelectric dam of Aña Cua.



3. SUPERVISION OF PAVING WORKS

Contractor: MINISTERIO DE OBRAS PÚBLICAS
Contract: Inspection of the Construction of Works of Paving in the Road Network. Package 3
Contract amount: 1,694,600 U \$\$
Period: December 2012

Description of the consultancy:

The main ITEMS to be audited are:

1. Ground movement:

- Clearing and clearing, removal of existing structures, excavation of pockets, unclassified excavation, embankment, granular filling.

2. Paved:

- Paved - trace, shoulders of selected ground.

3. Drainage works:

- Provision and installation of simple tubular sewer pipes of H°A°
- Base of cement floor.
- Pavement of H° type Cobblestone

4. ADDITIONAL WORKS:

- Metal guardrails for defense, wire fences, energy dissipator, gutter coated with concrete.
- Sewage Cells of H°A°
- Bridge of H° A°

The tasks involved the inspection of the paving works in various sections of the Road Network of Paraguay.

4. PORT OF ENCARNATION

Contractor: BINATIONAL ENTITY YACYRETÁ

Contract: Puerto de Encarnación Project with Projection for the Year 2030

Contract amount: 1,600,000 US \$

Period: Year 1994

Consortium: ETIC

Services provided:

1. Port enclosure - Fluvial station, berth for ships and inclined plane for vehicle transport barges.
2. Terminal:
 - Dock for various goods.
 - Dock for containers.
 - Service pier.
 - Dry dock. Varadero.
 - Fishing port.
 - Central Administration
 - Buildings and Warehouse.
 - Port equipment.
 - Construction Programming in three stages.
 - Infrastructure - electrical network - water network, sewage system.
 - Communication Network.



5. STRATEGIC PLAN FOR LIFTING OF PACKAGING AT DEFINITIVE PROJECT LEVEL - PEY

Billed Amount: US \$ 5,074,321 (JUN / 93 values)

Duration: March 2001 to October 23, 2003

Participation of the ETIC CONSORTIUM: US \$ 1,504,068

Participation of INTEC S.A. in the billing of the ETIC CONSORTIUM: US \$ 156,876

The consulting services carried out during the 2001-2003 period included:

5.1 WORKS OF PROTECTION OF THE CUENCA DEL ARROYO AGUAPEY -

Preparation of the Executive Project of the works, whose construction was divided into four construction stages and presupposes an important movement of earth (10,831,500 m³ of Excavation in Soil, 920,000 m³ of Excavation in Rock, 380,000 m³ of Landfill in Roca y Filtro, 950,000 m³ of Landfill) and 9,900 m³ of Concrete.

Stage I: Includes works worth US \$ 27,100,000, and consists of:

- Aguapey Link Channel - Foot of Dam (12,500 meters of total length)
- Control Structure with Bridge and Electromechanical Equipment
- Relocation of Route No. 5 B (2,500 m long asphalt pavement).
- Concrete walkways for crossing animals on the Link Channel

Stage II: Works totaling US \$ 15,000,000, according to the following detail:

- Containment Dam (4,000 m in length with Asphalt paving in the Dam Coronalization).
- Watering with Segmented Concrete Clogs

Stage III: What is the value of US \$ 12,800,000, with the works:

- Relocation of National Route No. 1 (5,700 m with asphalt paving)
- Concrete bridges (2 structures of 175 meters and 50 meters).

Stage IV: With a value of US \$ 2,000,000 for the work:

- Canal Bridge over the Aguapié Link Channel - Pie de la Presa
- Cadastre and measurement of properties affected by road relocation.

The work involved the preparation of the Technical Documents - Contract for the calls for International Public Tenders and Reports on the Offers submitted.

5.2 HABITATIONAL COMPLEX 1057 HOUSES IN VIRGEN DE FÁTIMA - ARGENTINA:

It includes the following tasks carried out during the period 2002 to 2003:

- Executive Project and preparation of the bidding and inspection documents of Work of the following contracts:
 - 1053 Housing including Sector Urban and Rural Equipment and Works
Service infrastructures (electricity, potable water, sewer, cobblestone) totaling a cost of US \$ 8,600,000.-
 - Community Center with Community Equipment (secondary school, plaza, dining room, sports center, health center, nursery, etc.) with a total cost of US \$ 1,200,000.-
- Preparation of the Technical - Contract Documents for the call to National Public Tenders, Reports on the Offers submitted and Advice to the Client until the signing of the Contracts.
- Inspection of Work during the construction of the Housing Complex of Fatima



5.3 HABITATIONAL COMPLEX 329 HOUSES IN CARMEN DEL PARANÁ

Executive Project, preparation of bidding documents, Reports on the Offers submitted and Advice to the Client for the signing of the Contracts for the following works (period from 2002 to 2003):

- Movement. of Soils and Leveling of streets and blocks U \$ S 600,000
- Infrastructure of Services of Running Water and Sanitary Sewerage U \$ S 1,000,000 comprising:
 - Drinking Water System (Deep Well, Chlorination and Tank System High).
 - Drinking Water Distribution Network (6,000 meters of PVC piping with diameters 63 mm, 90 mm, 110 mm, 160 mm, 200 mm, 250 mm and 315 mm, in addition to 329 Domiciliary Connections).
 - Lagoon of Stabilization of Sewage Liquids and Elevating Station.
 - Sanitary Sewerage Network (6,000 meters of PVC pipe diameters 150mm and 250mm, in addition to 329 Domiciliary Connections).
 - Surface Drainage, Paved Pavement (48,000 m²).
 - Green areas.
- Construction of 329 Dwellings and Community Equipment (High School, plaza, dining room, sports center, refurbishment and reconditioning works in Existing police station and health center, etc.) totaling 4 contracts that add up U \$ S 2,700,000.
- Electrical Networks for US \$ 100,000

5.4 SANITARY WORKS IN ENCARNATION (YEARS 2002 - 2003):

Review and optimization of the existing project, preparation of the Technical Documents - Contract for call for bids, reports on the bids submitted and advice to the Client for the signing of the Contracts of the following works:

- Extension of the Potable Water and Sanitary Sewer System of the city of Incarnation - South Zone, with a value of US \$ 4,600,000, which includes:
 - Drinking Water Treatment Station.
 - Aductors of Raw Water and Distribution Centers.
 - 3 Pumping Stations for the Drinking Water System
 - Distribution Centers with reservoirs and elevated tanks.
 - Drinking Water Distribution Network (70,000 m of PVC piping with diameters 60 mm, 110 mm, 150 mm, 200 mm, 250 mm and 300 mm-15,000 m H^ºF^º pipe of diameters 150 mm, 450 mm and 700 mm in addition to 8,000 Home Connections units of ½ ", ¾" and 1 ".)
 - 14 Sanitary Sewer Pumping Stations
 - Pipes for the Sanitary Sewer System (93,000 m of PVC piping with diameters 150 mm, 200 mm, 250 mm and 300 mm-11,000 m pipe) H^ºF^º drive with diameters 80 mm, 100 mm and 150 mm, in addition to 3,000 units of Home Connections.
- Construction of Conduction Lines, Pumping Stations and Plant Treatment of sewage liquids in the city of Encarnación with a value of U \$ S 4,800,000.

Main Works included:

- Structure of Entrance to Lagoons.
- Aeration Lagoons.
- Sedimentation lagoons.
- Dry Beds.
- Final Launching Works
- Coastal Protection.
- Laboratory and Administration Buildings, Deposit, Caregiver's House, Landscaping
- Pozo, Estación de Bombeo, Tanque Elevado e Interconexión Hidráulica.
- Access Road (16,000 m² of pavement type Empedrado).
- Lines of Conduction (3,500 meters of pipe of H^ºA^º of diameters of 400 mm, 500 mm and 600 mm-5,500 m of pipe of Ductile Iron of diameters 75 mm, 350 mm, 400 mm, 500 mm and 600 mm.-300 m PVC pipe diameters 150 mm and 200 mm-200 m of Ceramic pipes)

5.5 URBAN PROJECT FOR ENCARNATION

The tasks have included:

- Review of existing Executive Projects.
- Preparation, management and monitoring of the Works and Actions Master Plan.
- Proposals for the urban reformulation of Encarnación. Basic project of Costanera in Encarnación constituted by an avenue of two roads with central promenade, coastal vetch, cycle and associated recreational programs.

Current Scenario Encarnación



Scenario prior to relocations



Intermediate Scenario Parked Area



Final Stage Cota Reservoir 83 mSNM



5.6. WORK RELATED TO SOCIAL ASPECTS - ECONOMIC, ENVIRONMENTAL AND OF INSTITUTIONAL STRENGTHENING

Made in the period corresponding to Years 2001 - 2003

- **Evaluation of Socioeconomic Impacts of YACYRETA on the population (Neighborhoods of the Isla Yacyretá, Mercedes, San José Obrero, Villa Cristina, Settlement Atinguy)**
- **Works in Carmen del Paraná**
 - Socioeconomic and Cultural Impacts
 - Survey of opinion and attitudes of community leaders
 - Analysis of productive structures and economic resources
 - Interinstitutional and communication relations with government authorities and local organizations to ensure the development of the Draft
 - Communication Mechanism for the harmonious development of activities
 - Urban-environmental development plan of Carmen del Paraná - Technical Analysis and Environmental of the Project Works
 - Environmental Control Plan (PGA) of the Carmen Housing Complex Paraná: 320 Housing and Community Equipment and Infrastructure.
- **Works of PEY 2.002**
 - Design and implementation of the Supervision and Inspection of Works for the compliance with guidelines and plans for social and environmental management during the construction of the works.
 - Support for the management of the Action Plan for Resettlement and the Rehabilitation (PARR) developed by the EBY.
 - Advice on inter-institutional and communication relations with local authorities and organizations to ensure the development of the Works Plan in Encarnación. Communication Mechanism for the harmonious development of activities. Design of the Communication Plan.
 - Report on the Evaluation of the Prolonged Operation of Embalse a Cotas Intermediate
 - Environmental Control Plan (PGA) for the Works of Protection of the Streams Aguapey and Tacuary.

**6. COMPREHENSIVE MANAGEMENT AND SUPERVISION OF SERVICES
ENGINEERING OF THE PROJECT FOR ROAD WORKS IN THE
REPUBLIC OF PARAGUAY CORRESPONDING TO THE PTY
(LIFTING PLAN OF THE PACKAGING) Stage II- Package
A in the areas of influence of Routes I and VI**

Approximate value of the Contract: US \$ 598,503

Duration: September 2008 - September 2009.-12 months

Name of the contractor: CONSORTIUM COSTERO PARAGUAYO

Preliminary studies of the project area including review of the Project Road design with structural package for a life of 20 years and preparation of the Detail Project of several sections of the National Routes N° I and VI in the area of influence of the Yacyretá Project and its connections and accesses to the roads and surrounding roads:

Review of Geological Studies. Review of Geotechnical Studies. Review of the Hydrogeological Studies. Review of Photographic Studies, etc. Inspection and Quality Control of Works.

a) ROAD TRACE REMOVAL: LENGTH 4 km
Soil Movement - Embankment: 196,000m³
Floors:
Base of Asphalt Concrete 2,610m³
C^a Asfáltico folder 3,340m³
Sub - Base Soil Cal 13,000m³
Works of Art and Drainage:
1 Bridge of H^aA^a Armed 682ml
Concrete 8,900m³
Electrical Installations - Lighting System: 4km.

b) SANTA MARÍA ROAD TRACK: LENGTH 6 km
Soil Movement - Embankment: 120,000m³
Floors:
Paved Type 40,880m²
Base of Asphalt Concrete 5,200m³
C^a Asfáltica folder 6,650m³
Sub - Base Soil Cal 32,000m³
Works of Art and Drainage:
2 Bridges of H^aA^a Armed 330ml each
Concrete 4,636m³
Electrical Installations - Lighting System: 4km.
ADDITIONAL WORKS:
Metal Handrail 1,940ml
Separator Type New Jersey 1,400ml
Vereda de Baldosones de H^a 19,020m²
Electrical Installations - Lighting System: 6km.

Santa María Road Section



Section Road Quitería



7. METAL TANKS AND TRUCK LOADING AND UNLOADING FACILITIES AND FLUVIAL VESSELS

Contractor: PETRÓLEO PARAGUAYOS - PETROPAR
Contract: METAL TANKS FOR LPG STORAGE, COMBUSTIBLES, AND FACILITIES FOR LOADING AND
DOWNLOAD OF TRUCKS AND OPERATIONS OF
DOWNLOAD OF FLUVIAL VESSELS.
Contract amount: 1,260,529 US \$
Period: 1.994 to 1.996
Consortium: Electromon-Intec S.R.L.

Description of the consultancy:

Planning, administration and control of project execution. Supervision of Preparation of the Executive Project by contractors. Inspection and assurance of the quality control of engineering for the provision of materials and equipment. Inspection of the manufacture, construction, assembly and quality assurance of the same, corresponding to four tanks 2,000 m³ for storage of LPG, dock for the reception of LPG from vessels in Paraguay River, reception and dispatches of LPG for trucks, reception of LPG from the refinery, for the Petropar industrial plant in Villa Elisa.

1. Executive project of all the components of the works,
2. Soil movements,
3. Construction of foundations in reinforced concrete.
4. Manufacturing, assembly, testing and testing of four tanks of 2,000 m³ for LPG storage, pressure of 17 atmospheres.
5. Sandblasting and painting of tanks,
6. Calibration of tanks,
7. Piping system and control valves for the conduction of liquefied gas LPG oil,
8. Rainwater drainage system,
9. Spring in H ° A ° for reception of LPG from the boats, with pumps of 250 m³ / h,
10. Reception and dispatch of LPG for trucks, with pumps of 4x40 m³ / h,
11. Reception of LPG from the refinery, with pumps of 10 m³ / h,
12. Hydraulic installation against fire,
13. Electrical installation in medium and low voltage,
14. Control and instrumentation room.
15. Control of the start-up and assurance of the quality of the facilities.

Metallic tanks for storage of LPG



HªAª spring for the reception of LPG



8. PDTE RAILWAY. C. A. LÓPEZ

Contractor: BINATIONAL ENTITY YACYRETÁ
Contract: Carlos A. Railway Relocation Project
López - Gral. Artigas - Encarnación 76 km.
Contract amount: 1,200,000 US \$
Period: Years 1976/78
Consortium: ETIC

Services provided:

1. Line drawing.
2. Superstructure.
3. Artworks.
4. Squares of maneuver.
5. Signaling.
6. Communication.
7. Stations and complementary constructions.

9. Fram passenger station

Contractor: BINATIONAL ENTITY YACYRETÁ

Contract: Passenger station of Fram

Contract amount: 200,000 U \$\$

Period: 1978-1979

Consortium: ETIC

Services provided:

1. Line drawing.
2. Superstructure.
3. Artworks.
4. Squares of maneuver.
5. Signaling.
6. Communication.
7. Stations and complementary constructions.

Covered area: 2000m2.

Free area: 5has.

10. Project of the Railway Station of charges of Encarnación

Contractor: BINATIONAL ENTITY YACYRETÁ
Contract: Railway Station Project of cargoes of Incarnation.
Contract amount: 100,000 U \$\$
Period: 1979-1980
Consortium: ETIC

Services provided:

1. Line drawing.
2. Superstructure.
3. Artworks.
4. Squares of maneuver.
5. Signaling.
6. Communication.
7. Stations and complementary constructions.

Covered area: 10 has.

Free area, for train maneuver yard, parking: 10 has.

11. Project for a Border Control Post in Pacú Cua

Contractor: BINATIONAL ENTITY YACYRETÁ
Contract: Project for a Border Railway Control Post in Pacú Cua
Contract amount: 100,000 U \$\$
Period: 1980-1981
Consortium: ETIC

Services provided:

1. Line drawing.
2. Superstructure.
3. Artworks.
4. Squares of maneuver.
5. Signaling.
6. Communication.
7. Stations and complementary constructions.

Covered area: 5,000m²

Free area, for train maneuver yard, parking lot: 3 has.

12. VILLA PERMANENTE PARAGUAYA

Contractor: BINATIONAL ENTITY YACYRETÁ

Contract: Executive Project of the Infrastructure of the Villa Permanente – Ayolas

Contract amount: 1,135,000 US dollars

Period: Years 1975/76

Consortium: CEPAYA

Services provided:

1. Potable Water Supply System
2. Sanitary Sewer System:
3. Soil studies for the implementation of the works of the pumping stations and for the collecting network,
4. Hydraulic design of the sewer system collector network.
5. Design of pumping stations,
6. Design of electrical installations, pumping equipment for pumping stations,
7. Development of hydraulic profiles of the collection network,
8. Listings of goods and services,
9. Technical specifications,
10. Budget,
11. Final technical report on the planning of the execution of the works in stages.
12. Network of storm drains.
13. Sanitation and Drainage of the Yaguary Creek.
14. Medium Voltage electrical network.
15. Low voltage electrical network and distribution centers.
16. Communication network
17. Housing project.
18. Project of the Commercial and Administrative Center.
19. Urban design
20. Coastal Defense and Perimeter Road.
21. Embarcadero de AYOLAS

Potable Water Supply Tank - Permanent Villa (Ayolas)



13. INCARNATION AIRPORT

Contractor: BINATIONAL ENTITY YACYRETÁ

Contract: Encarnación Airport Project Track of 2,800 mts.

Contract amount: 960,000 US \$

Period: Year 1979

Consortium: ETIC

Services provided:

1. Terminal building.
2. Complementary constructions
3. Track and Accessories.

14. VILLA PERMANENTE, AYOLAS - FISCALIZATION OF WORKS

Contractor: BINATIONAL ENTITY YACYRETÁ
Contract: Project of Control of the Works of Infrastructure, carried out in the Villa Permanent of Ayolas
Contract amount: 950,000 US \$
Period: Year 1982
Consortium: ARPAYA

These include the following works:

- Potable Water Supply System.
- Sanitary Sewer System
- Ground studies for the implementation of the works of the pumping stations and for the collection network.
- Hydraulic design of the sewer system collector network.
- Design of pumping stations,
- Design of electrical installations, pumping equipment for pumping stations,
- Development of hydraulic profiles of the collection network.
- Listings of goods and services.
- Technical specifications,
- Budget.
- Final technical report on the planning of the execution of the works in stages.
- Network of storm drains.
- Medium and Low voltage network.
- Home building.
- Construction of the Commercial and Administrative Center.
- Construction of 42 km of access roads.

15. PETROPAR METAL TANKS

Contractor: PETRÓLEO PARAGUAYOS - PETROPAR
Contract: Planning, administration and control of execution of the metallic tanks project for fuel storage. Inspection of Manufacturing and assembly
Contract amount: 800,000 US \$
Period: 1,996 to 1,998
Consortium: Electromon-Intec SRL

Description of the consultancy:

Planning, administration and control of project execution. Supervision of Preparation of the Executive Project by contractors. Inspection and assurance of the quality control of engineering for the provision of materials and equipment. Inspection of the manufacture, construction, assembly and quality assurance of the same, corresponding to six tanks (two of 15,000 m³, one of 30,000 m³, one of 24,000 m³ and two 10,600 m³), for the industrial plants of Petropar en Villa Elisa and Hernandarias.

1. Executive project of all the components of the works.
2. Movements of floors.
3. Study of compaction of slopes,
4. Construction of foundations in reinforced concrete,
5. Manufacturing, assembly, testing and testing of metal tanks,
6. Sandblasting and painting of metal tanks,
7. Calibration of tanks,
8. Construction of dams and enclosures,
9. Piping system for naphtha and diesel,
10. Industrial and rain drainage system for tanks and enclosures,
11. Hydraulic installation against fire,
12. Electrical installation in medium and low voltage,
13. Control of the start-up and assurance of the quality of the facilities.

Metallic tank for fuel - PETROPAR



16. PROJECT OF THE FACULTY OF MEDICAL SCIENCES

Contractor: UNIVERSIDAD NACIONAL FACULTY OF MEDICAL SCIENCES
Contract: Consultancy Service for the Development of the Project of the Future Headquarters of the Faculty of Medical Sciences.
Contract amount: 573,400 U \$\$
Period: November 2012 - December 2012

Description of the consultancy:

Collection and analysis of Antecedents, Development of the Draft, Development of Plans and Documents of the Executive Project

In the Project Development stage:

- Detailed architectural design;
- Structural and facilities design;
- General technical-artistic, descriptive and justifying memory;
- Technical specifications;
- Metrics and budget form;
- Scope and description of the works; Y,
- General data required for the preparation of the bidding documents y conditions corresponding to the call to construction of the works.



17. WORKS OF THE TACUARY STREAM BASIN

Amount of the Encomienda: U \$ \$ 538,667

Duration: March 23, 2001 to January 23, 2003

Participation of the ETIC CONSORTIUM: US \$ 401,577

Participation of INTEC S.A. in the billing of the ETIC CONSORTIUM: U \$ \$ 41,885

16.1. REVIEW AND UPDATING OF THE PROJECTS PROVIDED BY EBY IN CARMEN DEL PARANÁ, which have included:

- Elaboration of the Executive Project of:
 - Relocation of 4,500 m of National Route N ° 1 with access to streets collectors and roundabouts at important junctions.
 - Execution of 2 concrete bridges of 175 m and 50 m respectively.
 - Avenida de Circunvalación of 8,400 meters in the perilago of the city with vehicular road and pedestrian promenade including landscaping of green areas and beaches (650,000 m³ of loose material and 200,000 m³ of sand), storm drains and sewers.
 - Cadastre and measurement of the properties affected by the road relocation and the ring road.
 - Project of the Running Water and Sanitary Sewer System for all urban helmet with a horizon of 20 years, including:
 - Water treatment plant.
 - Center of distribution.
 - Fire station.
 - Administration Building.
 - Raw water intake.
 - Chemical House
 - Elevated tank.
 - Drinking Water Distribution Networks (24,000 m of PVC piping diameters 50 mm, 100 mm, 150 mm, 200 mm, 250 mm and 300 mm, in addition to 1,100 Home Connections).
 - Sewage Treatment Plant (Stabilization Lagoons, Pumping Stations).
 - Sanitary Sewer Networks (24,000 m of PVC pipe by gravity with diameters 150 mm, 200 mm, 250 mm and 300 mm-5,000 m of PVC pipe by impulsion of diameters 150 mm and 250 mm, in addition to 1,100 Home Connections).
 - Enriched road access to the Work of Toma of 3,100 m in length.
- Preparation of the Technical - Contract Documents for the call to International Competitive Bidding.

18. ENGINEERING PROJECT

Contractor: MINISTERIO DE OBRAS PUBLICAS
Contract: Consulting Service for the realization of
Engineering studies of the section: San Pedro- Piripuku-Potrero Naranja-Punta
Riel and Access to the
Puerto Ybapovo.
Contract amount: 390.072 U \$\$
Period: November 2012 - September 2013

Description of the consultancy:

Description of the services effectively provided by the staff for the following works:

- topographic studies
- geological studies
- hydrological studies
- design of work of art - bridge of H°A°, cellular and tubular sewerage of H°A°
- final planimetric design of the route
- computation of the items of the work
- environmental studies
- technical specifications for the work final
- engineering memory

19. PROJECT FOR THE EXPANSION OF AIRPORT INFRASTRUCTURE

Contractor: NATIONAL DIRECTORATE OF CIVIL AERONAUTICS Contract:
Contracting of Consulting Services for the
Development of Infrastructure Expansion
Airport-AISP
Contract amount: 334.111 U \$\$
Period: April 2012 - November 2012

Description of the consultancy:

Collection and analysis of Antecedents, Development of the Draft, Development of Plans and Documents of the Executive Project

General Objective: Elaboration of the executive projects for the renovation, re functionalization and expansion of the Airport.

Works of Management and Approval are carried out based on the Preliminary Draft by SEAM, ESSAP, ANDE.

In the Project Development stage:

- Detailed architectural design;
- Structural and facilities design;
- General technical-artistic, descriptive and justifying memory;
- Technical specifications;
- Metrics and budget form;
- Scope and description of the works;
- General data necessary for the preparation of the bidding documents and conditions corresponding to the call to construction of the works.



20. ENGINEERING PROJECT

Contractor: NATIONAL EMERGENCY SECRETARIAT
Contract: Engineering Studies for Defense Against
Floods of High Paraguay Localities and
Pte. Hayes.
Contract amount: 250,000 U \$\$
Period: September 2011 - November 2011

Description of the consultancy:

- Definition of flood areas
- Socio-economic survey
- Flood studies of the Paraguay River
- Survey altimetric plani
- Study of floors for loans
- Design of the protection wall with granular material
- Design of pumping equipment
- Design of electrical installations
- List of goods and services
- Budget
- Technical specifications
- Manuals of operation and maintenance of treatment plant
- Preparation of the list of bases and conditions

21. ENGINEERING PROJECT

Contractor: MINISTERIO DE OBRAS PUBLICAS
Contract: Engineering studies for Paving type Paved Stretches: Package 2:
Yabebyry-Santa Rita
Contract amount: 240.350 U \$\$
Period: June 2011 - February 2012

Description of the consultancy:

Description of the services effectively provided by the staff for the following works:

- topographic studies
- geological studies
- hydrological studies
- design of work of art - bridge of H°A°, cellular and tubular sewerage of H°A°
- final planimetric design of the route
- computation of the items of the work
- environmental studies
- technical specifications for the work
- final engineering memory

22. COASTAL DEFENSE IN PILLAR AND CONCEPTION

Contractor: INSTITUTO DE DESARROLLO MUNICIPAL-IDM
Contract: Executive Project of the Coastal Defense in the
Cities of Pilar, Antequera and Concepción
Contract amount: 230,000 US dollars
Period: 1,987
Consortium: Architecture and Engineering and Associates

Description of the consultancy:

Development of the Executive Project of the works of defenses against flooding of the River Paraguay

1. Definition of flood areas,
2. Socio-economic survey,
3. Flood studies of the Paraguay River
4. Survey altimetric plan,
5. Study of land for loans,
6. Design of the protection wall with granular material,
7. Design of pumping equipment,
8. Design of electrical installations,
9. List of goods and services,
10. Budget,
11. Technical specifications,
12. Manuals of operation and maintenance of treatment plant,
13. Preparation of the list of bases and conditions.

23. POTABLE WATER SUPPLY SYSTEM

Contractor: NATIONAL SERVICE OF ENVIRONMENTAL SANITATION - SENASA

Contract: Consulting Services: Inspection of Works of Potable Water Supply Systems in 48 Locations.

Contract amount: 222.749 U \$

Period: April 2006 to the present

Description of the consultancy:

Description of the services effectively provided by the staff consisting of the Inspection of the following works:

Construction of Potable Water Supply Systems, consisting of following activities to be carried out by the Contractor that is planned to be executed in forty-eight (48) potable water supply systems, corresponding to the tenth group of drinking water supply systems:

- deep well drilling,
- elevated metal tanks,
- Fiberglass tanks with metallic and surface structures,
- operation booths,
- extension of medium and low voltage power lines,
- provision and electromechanical installation,
- provision of pipes and accessories for distribution network,
- drive lines and home connections
- construction of pressure-breaking cameras.

24. ABSOLUTE ALCOHOL PLANT OF THE APAL IN MAURICIO JOSÉ TROCHE

Contractor: APAL

Contract: Structures Engineering Advice e

Sanitary Engineering to the Consultora Monitor S.A. Construction supervision

Contract amount: 160,000 USD

Amount of works: US \$ 18,000,000. Period: Years 1981

Consortium: Associated with the MONITOR S.A.

The construction of:

a. Structures

- I. Equipment bases (with dynamic load).
- II. Equipment bases (with static charge).
- III. Bases of buildings.
- IV. Structure of H° A°.
- V. Metallic structures.

b. Ingeniería Sanitaria

- I. Fire station.
- II. Adductora Water Line.
- III. Treatment plant for boiler and drinking water.
- IV. Distribution network of industrial and potable water.

25. ENGINEERING PROJECT

Contractor: MINISTERIO DE OBRAS PUBLICAS
Contract: ELABORATION OF ENGINEERING STUDIES OF VARIOUS SECTIONS OF THE NEIGHBORHOOD ROADS OF LA REGION ORIENTAL-AD REFERENDUM TO THE FINANCIAL PLAN, PACKAGE 5.
Contract amount: 155,500 U \$\$
Period: December 2012 - August 2013

Description of the consultancy:

Description of the services effectively provided by the staff for the following works:

- topographic studies
- geological studies
- hydrological studies
- design work of art - HºAº bridge, cellular and tubular sewerage of HºAº
- final design altimetric plan of the route
- computation of the items of the work
- environmental studies
- technical specifications for the work
- final engineering memory

26. ITAIPU HYDROELECTRIC PROJECT

Contractor: ITAIPU BINATIONAL ENTITY
Contract: Geognostic Study of the Hydroelectric Project ITAIPU
Contract amount: 150,000 US \$
Period: Years 1969/72
Consortium: Geotechnical S.A. from Brazil.

These works include:

1.1. First phase:

Soundings on the Paraná River and on both banks with permeability tests, trenches and manual wells with extraction of disturbed and indisturbed soil samples.

These works were carried out in two places:

Santa María 11 km south of Saltos del Guairá and ITAIPU to determine the location of the main dam.

1.2 Second stage:

Execution of rotating soundings in the Paraná River and on both banks with tests of water infiltration and cement injection. Excavation of galleries in the landfill area.

27. CONSOLIDATION OF RURAL COLONIES

Contractor: General Directorate of National Service – SENASA
Contract: Consolidation, inspection, planning and control of the construction of civil works components of drinking water systems in rural neighborhoods - IDB Loans N ° 694 / OC-PR and N ° 891 / SF-PR
Contract amount: 145,650 US \$
Period: 1,996 to 1,997

Description of the consultancy:

Inspection, planning and control of the construction of the components of the works civilians of drinking water supply systems in rural settlements.

- 1) Drilling and testing of drilled wells,
- 2) Designs of deep wells,
- 3) Manufacture and construction of metal tanks of 10 m³,
- 4) Construction of the operation booths,
- 5) Provision and assembly of the electric pumps in the wells,
- 6) Provision and assembly of the motor compressors in the booths,

7) List of rural settlements:

- | | |
|-----------------------------|------------------------------|
| ○ Herminio Mendoza | ○ Brasileiro cué |
| ○ Captain Sosa | ○ Primavera |
| ○ Santo Domingo de Horqueta | ○ María Auxiliadora |
| ○ Impale | ○ Virgen del Camino |
| ○ 8000th Street | ○ San Blas |
| ○ 1 Blas Garay Street | ○ Naranjatý |
| ○ 2 Blas Garay Street | ○ Tuparendá |
| ○ Aguapety | ○ Km 39 Ex – vía férrea |
| ○ Azotey | ○ Bernardino Caballero |
| ○ Capillita | ○ Santa Clara |
| ○ President Franco | ○ Santa Clara calle 7 |
| ○ sacred Family | ○ Yhacá |
| ○ Jhuguá Tadeo | ○ Santo Domingo RI3 Corrales |
| ○ Arroyito | |

28. AUDIT OF LIBRARY AND CENTRAL ARCHIVE

Contractor: NATIONAL CONGRESS
Contract: Inspection Service of Works of the
Construction of the Library and Central Archive of the
National Congress.
Contract amount: 123.192 U \$\$
Period: March 2011

Description of the consultancy:

- Inspection and inspection of the construction to ensure its compliance with the plans, specifications and other documents included in the construction contract
- evaluation of construction methods and quality control of materials used by the contractor
- assembly and provision of the instrumental equipment of the central laboratory and the field ones, which are necessary throughout the construction for tests
- study the program to which the development of the works and the schedule submitted by the contractor in its offer must be subject
- verification of the certificates of the tests of asphalt, cement, steels and other construction materials submitted by vendors or by independent testing labs
- approval of the types and origin of the equipment and manufactured materials that will be used in the construction
- control and approval of permanent construction plans or temporary documents submitted by the contractor
- prepare the orders of change and orders of extra work, with the justifying report of the same ones and put to consideration of the MOPC for its approval
- field measurements to verify the progress and estimate of partial payments for the work executed. Conduct periodic reviews of amounts of works remaining to update the estimates that affect the missing work.
- control of compliance with the work schedule of the contractor, and adoption of measures for cases of delay in the execution of the work that do not involve changes in the plans, specifications and documents of the work contract
- review and monthly verification of invoices and certificates submitted by the contractor for monthly work payments

29. ENGINEERING PROJECT

Contractor: MINISTERIO DE OBRAS PUBLICAS
Contract: Final Engineering Design for Paving
Asphalt of the section "Curuguaty-Villa Ygatimi-
Ypehu "
Contract amount: 115,540 U \$\$
Period: October 2011 - May 2012

Description of the consultancy:

- Topographical, geotechnical and hydrological studies.
- Design altimetric plan, pavement design and works of art.
- Calculations, costs and budgets.
- Technical specifications

30. FERTILIZER MIXING PLANT - FERTIPAR

Contractor: MINISTRY OF AGRICULTURE AND LIVESTOCK **Contract:** Executive
Project of a Mixing Plant of
Fertilizers
Contract amount: 98,000 US \$ - **Period:** 1,990 to 1,991

Description of the consultancy:

Planning and development of the Executive Project of the fertilizer mixing plant located in the town of Bella Vista.

1. Survey altimetric plan,
2. Ground studies for foundation,
3. Design of the metal and concrete structure of the sheds,
4. Design of electrical installations in low and medium voltage,
5. List of goods and services,
6. Budget,
7. Technical specifications,
8. Preparation of the list of bases and conditions.

31. POTABLE WATER SUPPLY SYSTEM

Contractor: NATIONAL SERVICE OF ENVIRONMENTAL SANITATION - SENASA

Contract: Consulting Services: Inspection of the Construction of the Integrated Drinking Water Supply System with participation of the Private Sector for Nanawa, Puerto Falcón, Beterete Cué and Chaco

Contract amount: \$ 96,000

Period: August 2004 - August 2005

Description of the consultancy:

Description of the services effectively provided by the staff consisting of the Inspection of the following works:

- 1) Electric Power Distribution Station.
- 2) Raw Water Collection System of the Paraguay River.
- 3) Chemical products operation booth.
- 4) Constructions of Reinforced Concrete fck 210 kg / cm³, according to the following detail:
 - a. Planta de Tratamiento - Tank half-buried with capacity 300 m³, Tank elevated of 20 ms. of height and capacity 150.00 m³, Raw Water Treatment Module, with a flow rate of 60.00 m³ / hour and with a power of 20 hours daily
 - b. Nanawa - Tank half-buried with a capacity of 100 m³, Elevated tank with a height of 16.00 m and a capacity of 60.00 m³
 - c. Chaco-í - Tank half-buried, capacity 40 m³, Elevated tank 16.50 ms in height and capacity 20.00 m³.
- 5) Adductor: Suction lines, impulsion lines, supply network and network distribution, globalize 103,809 linear ms of suitable pipes.
- 6) Initial users, according to Project and census practiced, in total 347 local commercial activities, existing in Nanawa and Puerto Falcón. The expected total of residential connections, reaches 1990 units.

View Treatment Plant (Tank, Reservoir, Module)



Pumps of 30 Hp of Tank Drive of 150 m3



View of the 200-foot drop pipe of the 150 m3 Elevated Tank



32. WATER SYSTEM EXTENSION

Contractor: CONSORTIUM DE EMPRESAS CONSTRUCTORAS Contract: Planning, supervision and quality control for the expansion of the potable water system of Asunción - CORPOSANA
Contract amount: 82,000 US dollars - Period: 1,992 to 1,993

Description of the consultancy:

Planning, supervision and quality control of the execution of the works of the semi-buried tanks of 8,000 m³ and 3,000 m³ of capacity and of the hydraulic and electromechanical installations of the distribution centers of the referred tanks, the expansion of the potable water supply system for Greater Asunción.

1. Soil studies for the foundation,
2. Quality control of concrete and structural steel,
3. Quality control of waterproof render,
4. Quality control of the labor used during the works,
5. Quality control of the hydraulic materials of the pumping stations,
6. Quality control of electrical and electromechanical components of the pumping stations,
7. Supervision of the start-up of the pumping stations,

33. TREATMENT PLANT FOR DRINKING WATER

Contractor: KAPPA S.R.L.
Contract: Elaboration of plant projects
Treatment for Drinking Water in Rural Areas
Contract amount: US \$ 80,000
Period: August of 1.994 to March of 1995
Amount of Works: 1,345,664 US \$

Description of the consultancy:

Preparation of treatment plant projects for the elimination of iron and manganese, through a source of supply of deep wells, for potable water supply systems in rural communities, for the presentation of the offer in the National Public Tender 11 / 96- SENASA.

PROJECTS WITH UNDERGROUND SOURCE

- 1) Water quality studies of deep wells
- 2) Jar-Test tests,
- 3) Survey altimetric plan,
- 4) Design of pumping equipment for raw and treated water, and dosing pumps,
- 5) Design of electrical installations,
- 6) Aerator design with horizontal trays,
- 7) Design of the drainage line of the treatment plant,
- 8) Design of metallic elevated tanks and metallic cylinders for plants treatment,
- 9) Hydraulic design of the treatment plant of the metallic compact type, under pressure, with flocculator / decanter, clarifier with contact bed and rapid filter,
- 10) Design of reinforced concrete structures for the aerator,
- 11) List of goods and services,
- 12) Budget,
- 13) Rate analysis of the operation of the system,
- 14) Technical specifications,
- 15) Manuals of operation and maintenance of treatment plant,
- 16) Preparation of the list of bases and conditions,
- 17) List of locations and scope of works. Table N ° 2.

TABLE N ° 2
PROJECT: PLANT OF TREATMENT FOR DRINKING WATER
ELIMINATION OF IRON AND MANGANESE

ITEM	LOCALITIES	PLANT TREATMENT	LINE DRAIN	AERATOR VERTICAL
1	Humaitá	15 m³/h	588 mts	1 x 6 mts
2	San Juan del Neembucú	13 m³/h	205 mts	1 x 6 mts
3	Gral. Díaz	10 m³/h	400 mts	1 x 6 mts
4	Paso de Patria	10 m³/h	761 mts	1 x 6 mts
5	Mayor Martínez	7,5 m³/h	173 mts	1 x 6 mts
6	Cerrito	6,5 m³/h	79 mts	1 x 6 mts
7	Laureles	5,5 m³/h	459 mts	1 x 6 mts
8	Itá Corá	3 m³/h	180 mts	1 x 6 mts
9	Desmochados	3 m³/h	226 mts	1 x 6 mts
10	Villabin	3 m³/h	345 mts	1 x 6 mts
11	Guazú Cuá	3 m³/h	144 mts	1 x 6 mts
12	Tacuaras	3 m³/h	140 mts	1 x 6 mts
13	Isla Úmbu	3 m³/h	334 mts	1 x 6 mts
14	Yabebyry	3 m³/h	479 mts	1 x 6 mts
15	Mburicá	3 m³/h	385 mts	1 x 6 mts

PROJECT: PLANT OF TREATMENT FOR DRINKING WATER
SURFACE CAPTURE

ITEM	LOCALITIES	PLANT TREATMENT	LINE DRAIN	T.ELEVADO METAL
1	Caapucú	20 m³/h		
2	Villa Oliva	3 m³/h	140 mts	20 m³
3	Villa Franca	3 m³/h	120 mts	20 m³

34. DRINKING WATER IN DEPARTMENTS OF BORDER

Contractor: General Directorate of National Service - SENASA Contract:
Development of systems projects
potable water supply in border departments
Contract amount: \$ 62,000
Period: August to October 2000

Description of the consultancy:

Development of projects for drinking water supply systems, with source of provision through deep wells and surface catchment.

A. PROJECTS WITH UNDERGROUND SOURCE

- 1) Socio-economic survey
- 2) Survey altimetric plan,
- 3) Design of deep wells,
- 4) Design of the distribution network,
- 5) Design of submersible electric pumps and dosing pumps,
- 6) Design of electrical installations,
- 7) Design of metallic elevated tanks,
- 8) List of goods and services,
- 9) Budget,
- 10) Analysis of the operating system rate,
- 11) Technical specifications,
- 12) Preparation of the list of bases and conditions

ITEM	LOCALITIES	POZO	CASETA	T. ELEVADO	RED DIST.	N° CONEX.
1	Zanja Pytá	1x150 mts	3 m2	100 m³	23.635 mts	583 und.
2	Chiriguelo	1x150 mts	3 m2	50 m³	12.542 mts	206 und.
3	San Alfredo	1x90 mts	3 m2	30 m³	22.914 mts	231 und.
4	Paso Horqueta	1x120 mts	3 m2	50 m³	11.057 mts	175 und.
5	Curuñai	1x90 mts	3 m2	20 m³	13.354 mts	112 und.
6	B° San Blás/Cerro Corá	1x110 mts	3 m2	20 m³	5.426 mts	136 und.
7	Paso Barreto				13.743 mts	308 und.

B. PROJECTS WITH SURFACE SOURCE

- 1) Socioeconomic survey,
- 2) Water quality studies of the Paraguay River
- 3) Jar-Test tests,
- 4) Survey altimetric plan,
- 5) Design of the distribution network,
- 6) Design of pumping equipment for raw and treated water, and pumps dosadoras,
- 7) Design of electrical installations,
- 8) Design of the drainage line of the treatment plant,
- 9) Design of flocculation equipment,
- 10) Design of metallic elevated tanks,
- 11) Hydraulic design of the treatment plant with vertical flocculators, high rate decanters and fast filter,
- 12) Design of reinforced concrete structures for treatment plant, semi-buried tank and surface catchment,
- 13) List of goods and services,
- 14) Budget,
- 15) Rate analysis of the operation of the system,
- 16) Technical specifications,
- 17) Manuals of operation and maintenance of treatment plant,
- 18) Preparation of the list of bases and conditions.
- 19) List of locations and scope of works. Table N ° 3

TABLE N ° 3

PROJECT: DRINKING WATER IN DEPARTMENT OF FRONTERA - FONPLATA PAR 11/93

LOCALITIES WITH TREATMENT PLANT SYSTEM - ARMED CONCRETE STRUCTURE

ITEM	LOCALITIES	PLANT TREATMENT	LINE DRAIN	STAND OPERATION	SEMI- AWARDED TANK	TANK HIGH	NET DISTRIBUTION	CONNECTIONS DOMICILIARY
1	Capitán Bado	120 m³/h	1.760 mts x 250mm	205 m2	300 m³		50.018 mts	1.563 und.
2	Vallemí	100 m³/h	150 mts x 250 mm	205 m2	300 m³	150 m³	36.618 mts	1.186 und.
3	Puerto La Victoria	50 m³/h	780 mts x 400 mm	74 m2	100 m³	100 m³	17.812 mts	704 und.
4	Fuerte Olimpo	25 m³/h	700 mts x 300 mm	74 m2	80 m³	50 m³	12.082 mts	398 und.
5	San Lázaro	12 m³/h	420 mts x 300 mm	74 m2	40 m³	30 m³	6.107 mts	150 und.
6	Puerto Pinasco	12 m³/h	380 mts x 300 mm	74 m2	40 m³	30 m³	5.554 mts	190 und.
7	Bahía Negra	12 m³/h	370 mts x 300 mm	74 m2	40 m³	30 m³	5.610 mts	158 und.

35. SANITARY SEWER SYSTEM OF THE CITY OF ITA

**Contractor: CIVIL CONSTRUCTION CONSORTIUM e
HYDRAULICS**

**Contract: Design of the components of the sanitary sewer system and pre-
feasibility study
economic**

Contract amount: \$ 17,000

Period: February to May of 1996

Description of the consultancy:

Design of the components of the sanitary sewer system of the town of San Bernardino and economic Pre-feasibility study.

- 1) Survey altimetric plan,
- 2) Hydraulic design of the collection network of the sanitary sewer system of the type conventional,
- 3) Design of pumping stations,
- 4) Design of electrical installations, pumping equipment for stations pumping,
- 5) Budget,

Technical and economic pre-feasibility studies of the alternatives for the plant sanitary sewage treatment, using anaerobic upflow reactor with biological filter, or with facultative stabilization ponds

36. ROAD WORKS

1.1. ASPHALTIC PAVING OF ROADS THAT COMPRISE THE PROJECT YACYRETÁ

Amount of the road component: US \$ 1,327,333.
Amount of the Environmental Component: US \$ 427,366, .-
Participation of the ETIC CONSORTIUM: US \$ 398,200.-
Participation of INTEC S.A. in the billing of the ETIC CONSORTIUM: US \$ 41,532.-
Participation of the ETIC CONSORTIUM: U \$ S 128,209 ..-
Participation of INTEC S.A. in the billing of the ETIC CONSORTIUM: U \$ S 13,372.-
Period: January 2001 to July 2002

It includes the Services of: Design, Environmental and Works Inspection corresponding to the Asphalt Paving between the Central - Offices of the Client and Engineer in the Yacyretá Island and between the Central - Island Pier and the G1 Dining Room.

1.2. PAVING OF THE ROTONDA PORT SECTION 5 - MARGIN HEADER RIGHT OF THE BRIDGE YEARS CUA

Amount Of The Road Component: U \$ S 1,734,976.- Amount Of The
Environmental Component: U \$ S 535,802.- Share of the ETIC
CONSORTIUM: U \$ S 520,493.-
Participation of INTEC S.A. in the billing of the ETIC CONSORTIUM: U \$
S 54,288.-
Participation of the ETIC CONSORTIUM: US \$ 160,740.-
Participation of INTEC S.A. in the billing of the ETIC CONSORTIUM: US

It includes the Services of: Design, Environmental and Works Inspection corresponding to the resurfacing

1.3. INSPECTION OF THE CONSTRUCTION WORK OF 59 km OF ROADS SERVICE

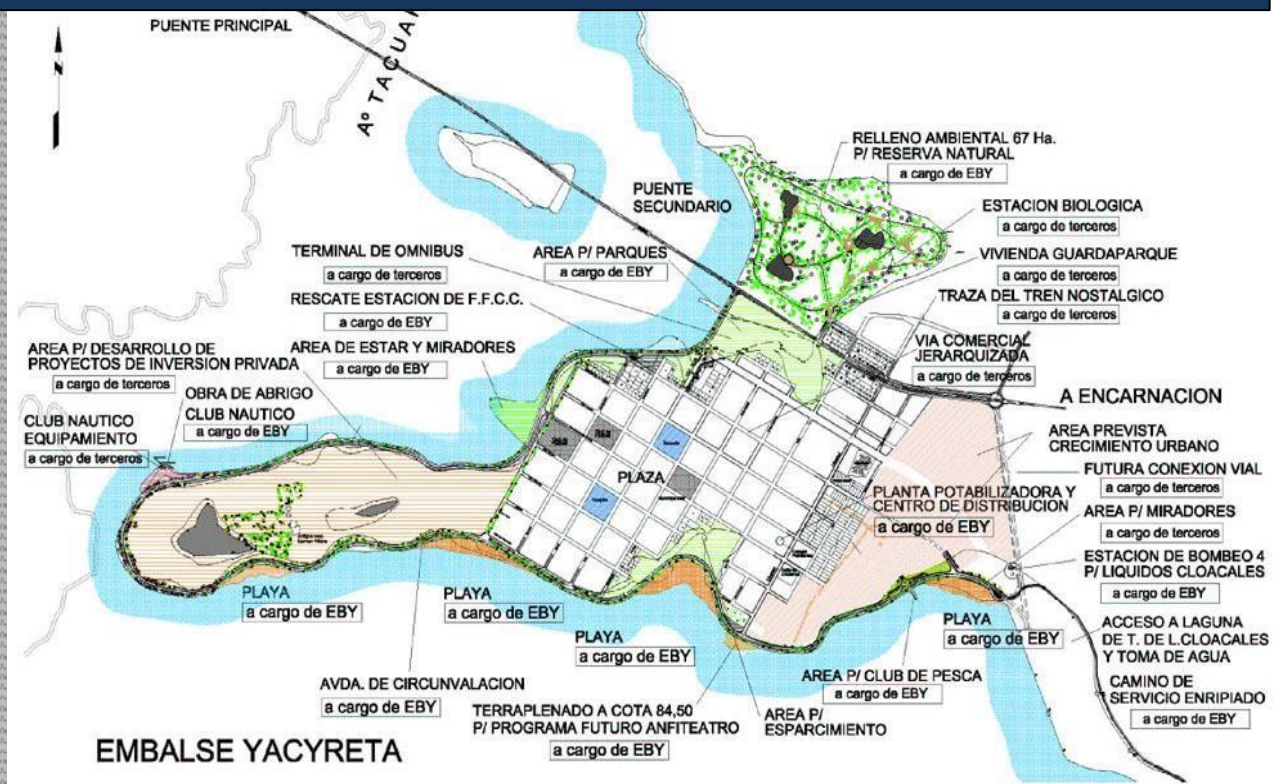
Amount of the road component: US \$ 3,181,479
Amount of the Environmental Component: US \$ 841,209
Participation of the ETIC CONSORTIUM: US \$ 954,443
Participation of INTEC S.A. in the billing of the ETIC CONSORTIUM: US \$ 99,549
Participation of the ETIC CONSORTIUM: U \$ S 252,362
Participation of INTEC S.A. in the billing of the ETIC CONSORTIUM: U \$ S 26,322
Period: January 2001 to July 2002

1.4. LONG-TERM SOCIAL, ENVIRONMENTAL AND URBAN PLANNING STUDIES FOR CARMEN DEL PARANÁ

Prepared within the framework of the YACYRETA Project, associated with the impact of the works necessary for the re-growth of the reservoir:

- Development of an Urban Master Plan including a set of guidelines proposals for sustainable urban development, with a horizon of 20 years.
- Studies and diagnosis of the demographic, socio-economic and cultural situation of the population and affected families.
- Survey of tangible and intangible heritage, institutional and historical evaluation of the population
- Survey of opinion and attitudes of community leaders on the effects and positive and negative impacts of the works
- Analysis of the productive structures and associated economic resources in order to identify new economic ventures for Carmen del Paraná.
- Interinstitutional and communication relations with government authorities and local organizations to ensure the development of the Carmen del Paraná Project
- Communication Mechanism for the harmonious development of activities.
Application of it
- Study to minimize the Environmental Impact produced by the works
- Preparation of the Technical - Contract Documents for the call to Public tenders.

Carmen del Paraná



37. SANITARY SEWER SYSTEM - SAN BERNARDINO

Contractor: INTERIOR SANITARY CONSORTIUM

Contract: Design review of sanitary sewer system components in San Bernardino

Contract amount: \$ 57,000

Period: January to August of 2,000.

Amount of Works: 2,300,000 US \$

Description of the consultancy:

Review of the designs of the components of the sanitary sewer system of the San Bernardino locality, prior to the construction of the works, for Contract No. 225/98 between BID-CORPOSANA.

1. Ground studies for the implementation of the works of the pumping stations,
2. Review of the hydraulic design of the sewer system collection network sanitary of the conventional type: 56.350 meters of PVC pipes in the diameters of 100 mm to 250 mm and 1,010 home connections,
3. Design of pumping stations,
4. Design of electrical installations, pumping equipment for stations pumping,
5. Development of hydraulic profiles of the collection network,
6. Technical and economic pre-feasibility studies of alternatives for the plant of sanitary sewage treatment, using anaerobic upflow reactor with biological filter, stabilization lagoon and activated sludge.

38. Project of the Passenger Rail Station of Encarnación

Contractor: BINATIONAL ENTITY YACYRETÁ
Contract: Project of the Encarnación Passenger Railway Station.
Contract amount: 50,000 U \$\$
Period: 1978-1979
Consortium: ETIC

Services provided:

1. Trazado de línea.
2. Superstructure.
3. Artworks.
4. Squares of maneuver.
5. Signaling.
6. Communication.
7. Stations and complementary constructions.

Covered area: 10,000m²

Free area, for train maneuvering yard, parking: 15,000m²

39. PROJECT DETAIL AND AUDIT OF HYDROELECTRIC WORKS YACYRETÁ

Contractor: BANATIONAL ENTITY YACYRETÁ **Contract:** PROJECT
DETAIL AND DIRECTION AND
OCCUPATIONAL SUPERVISION OF THE YACYRETÁ PROJECT
Period: 09.mar.1979 - 23.nov.2003
International Consortium: HARZA Y CONSORCIADOS CIDY **Local**
Consortium: CONSORTIUM ETIC
Technical manager
Local Consortium: INTEC S.A.

The following is a list of the works carried out within said Contract, which covered during Approximately 24 years of consulting services related to the Project, Management and Supervision, Supervision and Technical Coordination of the Totality of Project Works Yacyretá including Feasibility Study Works, Executive and Detail Project of Civil and Electromechanical Works, Environmental Studies, Socio - Economic, Hydrological - Hydraulics, and Management of Tenders and Contracts.

40. DEVELOPMENT OF THE EXECUTIVE, QUALITY AND AUDIT PROJECT OF THE WIRING FOR MOUNTING TELEPHONE NETWORKS

Contractor: CONSORTIUM REDTEL
Contract: Executive Project Development, Quality Control and Inspection of Wiring for Assembly of Aerial and Underground Telephone Networks for the Extension and Re-adaptation of the WECAFC Plant
Period: May 2007 - December 2007
Contract amount: 114,571 US\$ 555,670.00 Gs.

DESCRIPTION OF THE WORK:

Development of the Executive project, Quality Control and Wiring Control for the Assembly of Aerial and Underground Telephone Networks for the Extension and Re-adaptation of the Extreme Plant of COPACO S.A. in several Power Plants of Asunción and Interior of the Country. Group 3: Central 49 (Center), Central Workers' Quarter. Totaling a Total of 66,000 meters. of laying.

41. DEVELOPMENT EXECUTIVE PROJECT, WORK MANAGEMENT AND CONTROL OF QUALITY FOR THE CONSTRUCTION OF THE PORT TERMINAL

Contractor: CONSORTIUM M & T CONSTRCCION- ISACIO VALLEJO **Contract:** Executive Project Development, Construction Management and Quality Control for Terminal Construction
Port of Fuel for the South Pier
Period: 2002
Contract amount: 875,000,000 Gs. US \$ 150,862.06

DESCRIPTION OF THE WORK:

- Total built area: 8,000 m2
- Design of the Project
- Development of the Executive Project
- Construction management.
- Quality Control of the Construction of a Port Terminal of Fuel, with its access roads destined to the Petropar Plant, in Villa Elisa

42. EXECUTIVE PROJECT, WORK MANAGEMENT AND QUALITY CONTROL FOR THE CONSTRUCTION OF THE PORT TERMINAL

Contractor: CONSORTIUM M & T CONSTRCCION- ISACIO VALLEJO **Contract:** Executive Project, Construction Management and Control of Quality for the Construction of the Port Terminal of Fuel for the Central Pier
Period: 2002 -2003
Contract amount: 950,000,000 Gs. US \$ 163.793.10

DESCRIPTION OF THE WORK:

- Total built area: 10,000 m2
- Design of the Project
- Development of the Executive Project
- Construction management.
- Quality Control for the Construction of a Port Terminal for Fuel, with its access roads destined to the Petropar Plant, in Villa Elisa.

43. PROMOTION AND DISTRIBUTION OF MATERIALS FOR THE CONSTRUCTION OF 5,268. SANITARY LETTERS

Contractor: SENASA
Contract: Promotion and Distribution of Materials for the Construction of 5,268. Sanitary latrines
Period: 2008/2009
Contract amount: 2,888,251,000 Gs. - USS 627,880 Participation INTEC S.A. 722,062,750 Gs. U \$ S 156,970

DESCRIPTION OF THE WORK:

It includes the following tasks in the Departments of San Pedro, Caaguazú, Canendiyú and Ñeembucú.

Training of the affected population for the CONSTRUCTION OF LETRINAS - Orientation to the population so that it becomes aware of the need to have an adequate system of evacuation of excreta, indispensable to contribute to the improvement of the conditions of the families and therefore of the community .

DISSEMINATION: of the program in affected departments and districts through radio programs, street propaganda, written press, visits to authorities.

- **SELECTION OF BENEFICIAL LOCATIONS:**

Elaboration of the Participatory Management Model for the Award Process through a commission of inter institutional character composed of authorities, community referents of the area, the neighborhood commission and the technicians of the Consultant. The process takes as a criterion the sanitary diagnosis of the department or district to define the localities or companies to be benefited and then the existing community organizations or leaders together with

Technical consultants coordinate the work.

- **PROMOTION AND HEALTH EDUCATION:**

Includes community education on preventive health. It includes information meetings to authorities and the population.

Two educational talks at school level, two in schools and one at community level.

Teacher training on fight against intestinal parasitosis and hygiene habits. By location two at the school level and one at the secondary student level.

44. COMPREHENSIVE MANAGEMENT - REVISION AND FINAL DESIGNS FOR THE CONSTRUCTION OF THE PROJECT AND DEVELOPMENT OF THE ENGINEERING PLANS

Contractor: Road Engineering Consortium
Contract: INTEGRAL MANAGEMENT - REVISION AND FINAL DESIGNS FOR THE CONSTRUCTION OF THE PROJECT AND DEVELOPMENT OF ENGINEERING PLANS
DETAIL OF THE WORK: "REHABILITATION AND PAVING OF THE WALKWAY SECTION: PARGUARI -
TEBICUARY ". (59 km)
Contract amount: 1,250,000,000 Gs
Period: 2004-2011

DESCRIPTION OF THE WORK:

Description of similarity:

- Topographical studies
- Geotechnical and geological studies
- Hydraulic and hydrological studies.
- Geometrical design
- Pavement design
- Design of drainages and works of art.
- Design of complementary Works
- Metric calculation and budget
- Constructive, environmental and special technical specifications
- Environmental studies
- Transit studies
- Maintenance study and economic evaluation
- Georeferenced information system

Description of the Works

- Excavation: 174.105 m3.
- Construction of embankments: approx.1,304,923 m3.
- Construction of sewers: approx. 1601ml
- Filling: 446 m3.
- Excavation of drainage ditches: 12,648 m3.
- Protection foot of embankment foot: 3.883 m3.
- Concrete cuneta cord: 6.090 m3.
- Concrete-lined gutter type A: 902 m3.
- H ° 110 kg / cm2 p drainage channels. 981.21 m3
- Long Drain. Deep: 5,311.31 ml
- C15 = 40.62 m3 C24 = 57.3 m3.
- Improved sub base 232022
- Sub base of cement floor 109.818 m3 Sub
- Granular base with lime: 147.419
- Asphalt folder 26.380 m3
- Lighting poles - Arborization - Signage

Artworks:

Bridge No. 1

With a length of 15 m including:

C35: 33.56 m³ C24 = 261.61 m³ C15 = 9.38m³

Assembly of prefabricated beams totaling 62,80m

Steel Reinforcement - 16,676 kg. Active: 678.68 kg

Placement of 30m³ Gabions and 8 Neoprene Support devices

Dilation Board 20.64 ml

204m² of Reno Mattresses

48 m from Barandas

5 units of Board Drains

C24 prefabricated tile: 4,24m³

Bridge No. 2

With a Length 10 m including:

C24 = 206.48 m³ C15 = 7.44 m³

Assembly of prefabricated beams totaling 42.60m

Steel Reinforcement - 20,175 kg.

Placement of 30m³ Gabions and 8 Neoprene Support devices

Dilation Board 20.64 ml

120m² of Reno Mattresses

36 m from Barandas

8 units of Board Drains

Bridge No. 3

With a Length 30 m including:

C35: 67.12 m³ C24 = 322.53 m³ C15 = 8.40m³

Assembly of prefabricated beams totaling 125.60 ml

Steel Reinforcement - 35296 kg. Active 1.359 kg

Placement of 30m³ Gabions and 6 Neoprene Support devices

Dilation Board 20.64 ml

120 m² of Reno Mattresses

80.40 m from Barandas

10 units of Board Drains

Perforated pile 188 ml

Precast C24 tile: 8,46 m³

Bridge No. 4

With a Length 20 m including:

C35 = 42 m³ C24 = 269 m³ C15 = 9.38

m³

Assembly of prefabricated beams totaling 82,80m

Steel Armors - 22,819 kg.

Placement of 30m³ Gabions and 8 Neoprene Support devices

Dilation Board 20.64 ml

120m² of Reno Mattresses

56 m from Barandas

10 units of Board Drains

Perforated piling 130 ml

Precast C24 tile: 5.59 m³

Bridge No. 5

With a length of 15 m including:

C35: 35 m³ C24 = 220 m³ C15 = 9.32 m³

Assembly of prefabricated beams totaling 125.60 ml

Steel Reinforcement - 35296 kg. Active 1.359 kg

Placement of 30m³ Gabions and 6 Neoprene Support devices

Dilation Board 20.64 ml

120 m² of Reno Mattresses

80.40 m from Barandas

10 units of Board Drains

Perforated pile 188 ml

Precast C24 tile: 8.46 m³

Bridge No. 6

With a Length 20 m including:

C35 = 42 m³ C24 = 269 m³ C15 = 9.38 m³

Assembly of prefabricated beams totaling 62.80 m

Steel Reinforcement - 18,486 kg.

Placement of 30 m³ Gabions and 8 Neoprene Support devices

Dilation Board 20.64 ml

120m² of Reno Mattresses

58 m from Barandas

10 units of Board Drains

Perforated piles 160 ml

Precast C24 tile: 5.59 m³

45. INTEGRAL MANAGEMENT - REVISION AND FINAL DESIGNS FOR THE CONSTRUCTION OF THE PROJECT AND DEVELOPMENT OF THE ENGINEERING PLANS

Contractor: Road Engineering Consortium
Contract: REVISION OF THE PROJECT AND DEVELOPMENT OF THE PLANES OF THE ENGINEERING OF DETAIL OF THE WORK:
"REHABILITATION AND PAVEMENT OF THE SECTION WALKER: VILLARRICA-TEBICUARY-LA COLMENA (62 KM) ".
Contract amount: 1,000,000,000 Gs
Period: 2004-2011

DESCRIPTION OF THE WORK

Preliminaries:

Topographical, geotechnical and geological, hydraulic and hydrological studies.

Road Design:

geometric design, pavement, drainage and works of art, complementary works. Metric calculation and budget, Constructive, environmental and special technical specifications, environmental studies, traffic studies, maintenance and economic re-evaluation. Georeferenced information system

Description of the Works

- Excavation: 312,000 m3.
- Construction of embankments: approx. 2,000,000 m3 and pedraplen: 160,000 m3.
- Construction of sewers: approx. 1,700 ml.
- Granular filling: 9,500 m3.
- Excavation of drainage ditches: 4,480 m3.
- Construction of crown protection gutters: 3,010 m3.
- Dirt foot protection gutter: 16,540 m3.
- Asphalt concrete cord in embankment platform: 14,580 m3.
- Concrete-lined gutter type A: 16,120 m3.
- Granular sub-base of gravel: 140,000 m3., Crushed stone base: 131,000 m3. and base of asphalt concrete: 26,500 m3.
- Asphalt primer - 911,000 liters
- Guardrails of defense - 16,000 m
- Barbed wire to be built and moved - 110,000 m
- Concrete Cord - 6,800 m

A. **Artworks :**

- Mojones, Vertical and Horizontal Signs. Signage Portals, Shelter Carreteros Vegetable Siding - 148,000m²
- Specialized Services Facilities.
- Moving of power lines and affected telephone network and transfer of network of drinking water supply.
- Lighting system.
- Forest Protection, Tree Planting (832 units)
- Reno Stone Mattress Placement - 5,090 m² and 346 m³ of Gabions.
- Construction of 42,600 m² of Paved Type Pavement.

Bridge over the RIO TEBICUARYMI

- ✓ With a Length 215 m including: 516 m of Foundation Wells D = 100m
- ✓ Concrete Volume - 2,330 m³
- ✓ Assembly of prefabricated beams totaling 860m
- ✓ Steel Reinforcement - 255,000 kg
- ✓ Placing of 408 m³ Gabions and 56 Neoprene Support devices
- ✓ 204m² of Reno Mattresses

Bridge No. 1

With a Length of 20m including: 135m of Foundation Wells D = 80m240m³ of Concrete Volume Assembly of Pre-stressed Prefabricated Beams totaling 82 m21.000Kg of Steel Reinforcement Placement of 30 m³ of Gabions and 8 Neoprene Supporting Fixtures120m² of Reinforcing Shelves64 units of Barandas8 units of Drains of the Board. 10 units of Board Drains.

Bridge No. 2

With a Length of 15m including: 67m of Foundation Wells D = 80m220m³ of Concrete Volume Assembly Pre-stressed Prefabricated Beams totaling62m19.600kg of Steel Reinforcement Placing 30m³ of Gabions and 8 Neoprene appliances120m² of mattresses Reno49m of Handrails10 units of Drains of the Board

Bridge No. 3

With a Length of 15 m including: 82 m of Foundation Wells D = 80m242 m³ of Volume of Concrete Assembly of prefabricated beams totaling 62m Steel reinforcements - 21,000 kg Placement of 30 m³ Gabions and 8 Neoprene Supporting devices120m² Reno Mattresses130m Barandas10 units of Board Drains

Bridge No. 4

With a Length of 10m including82m of Foundation Wells D = 80m190m³ of Volume of Concrete Assembly of Pre-stressed Prefabricated Beams totaling 42 m19.600Kg of Steel Reinforcement Placement of 30 m³ of Gabions and 8 Neoprene Supporting Devices120m² of Reno Mattresses40m of Barandas430m of Railings

Bridge No. 5

With a Length of 15m including: 77m of Foundation Wells D = 80m220m³ of Volume of Concrete Assembly of pre-stressed prefabricated beams totaling 62m19,600 kg of steel reinforcement. 30m³ Gabion placement and 8 Neoprene appliances120m² of mattresses Reno48m of Handrails10 units of Drains of the Board

Bridge No. 6

With a Length of 20 m including 47 m of Foundation Wells D = 90m348m³ of Concrete Volume Assembly of Pre-stressed Prefabricated Beams totaling 165m24,000 kg of Steel Reinforcement Placing of 408 m³ of Gabions and 8 Support devices of Neoprene120m² of Mattresses Reno54 m of Barandas14 units of drains of the board

46. INTEGRAL MANAGEMENT OF THE ENGINEERING SERVICES OF THE PROJECT FOR ROAD WORKS

Contractor: Costero Consortium
Contract: INTEGRAL MANAGEMENT OF THE INGENIERAL SERVICES OF THE PROJECT FOR ROAD WORKS
IN THE REPUBLIC OF PARAGUAY CORRESPONDING TO THE PTY (PLAN OF ENVALSE) ETAPAI - PACKAGE TO IN LAS
AREAS OF INFLUENCE OF ROUTES I AND VI.
Contract amount: 5,705,000,000 Gs .- U \$ S 1,430,000
Period: 2008

DESCRIPTION OF THE WORK

Final Design of Road Project Engineering for the Construction of Roadworks of several sections of National Routes N ° I and VI in the area of influence of the Yacyretá Project and its junctions and accesses to the roads and surrounding roads in the Republic of Paraguay. Stage II "Package A". Detail of the works:

- Preliminary studies of the area of the projects including review of studies Geological, Geotechnical, Hydrological, etc.,
- Final Design of Engineering of Road Projects with structural package for a useful life of 20 years and elaboration of the Detail Project of the following sections:

ROAD TRIM REMOVAL:

- | | |
|---|------------|
| • LENGTH | 4 km |
| • Soil Movement - Embankment: | 196.000 m3 |
| • Floors: | |
| • Concrete Base Asphalt | 2.610 m3 |
| • C ° Asphalt Folder | 3.340 m3 |
| • Soil Sub-Base Cal | 13.000 m3 |
| • Works of Art and Drainage | |
| • 1 Bridge of H ° A ° | 682 ml |
| • Reinforced concrete | 8.900 m3 |
| • Electrical Installations - Lighting System: | 4 km |

YACU ROAD TRACE STEP: LENGTH	1,8 km
• Soil Movement - Embankment:	91.000m3
• Floors:	
• Paved Type	8.900 m3
• C ° Asphalt Folder	1.980 m3
• Works of Art and Drainage	
• 1 Bridge of H ° A °	180 ml
• Hormigón Armado	1.800 m3
• Complementary Works: Metallic Handrail:	800 ml
• Electrical Installations - Lighting System	800

YACU ROAD TRACE STEP: LENGTH	1,8 km
• Soil Movement - Embankment:	91.000 m3
• Floors:	
• Paved Type	8.900 m3
• C ° Asphalt Folder	1.980 m3
• Works of Art and Drainage	
• 1 Bridge of H ° A °	180 ml
• Reinforced concrete	1.800 m3
• Complementary Works: Metallic Handrail :	800 ml

VIERA TRACT MBORORE: LENGTH	1,3 km
• Soil Movement - Embankment:	58.960 m3
• Floors:	
• Paved Type	7.970 m2
• Works of Art and Drainage	
• 2 Bridges of H ° A °	54 ml
• Reinforced concrete	719 m3
• ADDITIONAL WORKS	
• Metal Handrail	710 ml

ELECTRICAL INSTALLATIONS:

ROAD TRACE REMOVAL: LENGTH 4 km

Laying of 8,700 meters of underground MV lines, with Unipolar conductors Type XLPE 240 mm2

Laying of 14,880 meters of overhead MV lines with 185 mm2 protected conductors

Installation of MV Disconnectors Under Load, with blade and fuses

Laying of 8400 mts underground conductor in Nyy 3x25 + 1 x 16 mm2 busway, for the lighting system of the access to the city of Encarnación, with the installation of 225 lighting fixtures mounted on 12-meter frustoconical columns. Santa María Road Section

Laying of 20,901 mts of Underground MT lines, with Unipolar conductors Type XLPE 240 mm2

Laying of 41,961 meters of overhead MV lines with 185 mm2 protected conductors

Installation of MV Disconnectors Under Load, with blade and fuses

Laying of 10,800 meters underground conductor in Nyy 3x25 + 1 x 16 mm2 busway, for the lighting system of the access to the city of Encarnación, with the installation of 398 lighting fixtures mounted on 12-meter frustoconical columns.

ROAD TRACE YACU STEP: LENGTH 1.8 km

Laying of 2,500mts of underground MV lines, with Unipolar conductors Type XLPE 240 mm²

Laying of 7,796 meters of overhead MV lines with protected conductors 185 mm²

Installation of MV Disconnectors Under Load, with blade and fuses

Laying of 1600 mts underground conductor in Nyy 3x25 + 1 x 16 mm² busway, for the lighting system of the access to the city of Encarnación, with the installation of 40 lighting fixtures mounted on 12-meter frustoconical columns.

ROAD TRACK MBORORE: LENGTH 1.3 km

Electrical Installations - Lighting System 1,3 km

Environmental studies:

Study of deposits of materials for the construction of the embankment by the refining method.

Topography of the track layout.

Preparation of environmental information, with the inclusion of the social aspect.

Review of available studies of environmental information (includes social aspects).

Technical meetings with the Client's specialists and with technicians from the Ministry of the Environment

(SEAM), and other competent bodies.

Field visits for primary information generation,

Preparation of technical reports to obtain the environmental license.

Preparation and subsequent distribution of documents, environmental reports, informative brochures and others prepared in the framework of the project.

Preparation and presentation of the Basic Environmental Questionnaire to the SEAM

Procedures before the SEAM to obtain the Environmental License

Definition of environmental parameters to be taken into account in the design of the project (in coordination with the technical team of the PEU)

Preparation of the study of Environmental Impact and Environmental Impact Report (EIA // RIMA) and presentation to the SEAM.

Preparation of ADDENDUMS as requested by the SEAM

Preparation of Public Hearing, of the documents for the same

Meetings with social actors interested in the project

Review of documents, environmental reports, informative brochures and others prepared in the framework of the project.

47. CONSULTING SERVICE

Contractor: NATIONAL AERONAUTICAL CIVIL ADDRESS (DINAC)
Contract: FOR THE CONTRACTING OF CONSULTANCY SERVICE FOR THE DEVELOPMENT OF THE EXECUTIVE PROJECT OF THE BUILDING OF THE HEADQUARTERS OF LA (DINAC)
Contract amount: 925,512,500 Gs
Period: 2013

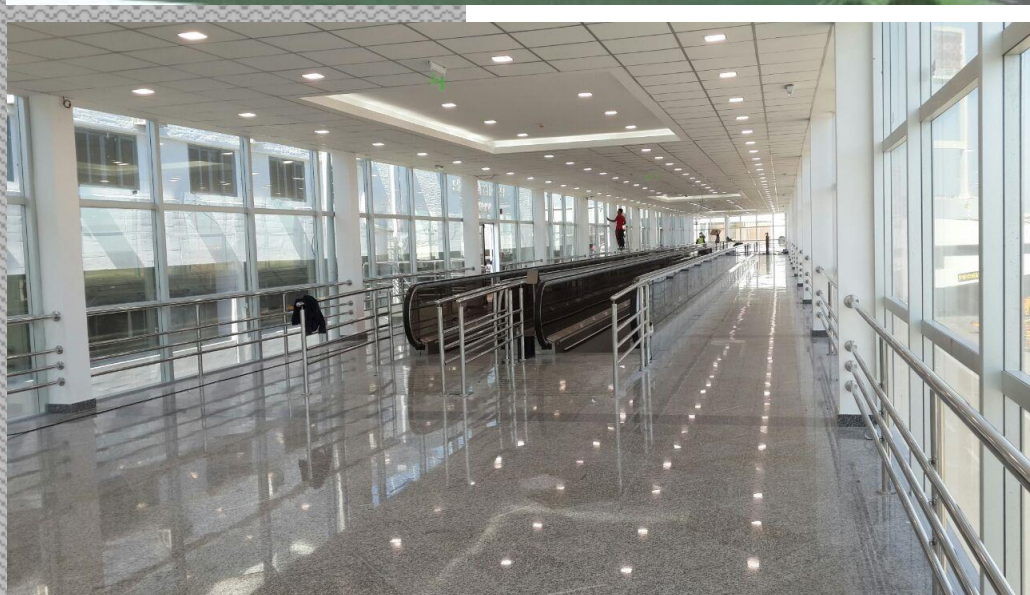
DESCRIPTION OF THE WORK:

Elaboration of the executive projects for the renovation, re functionalization and extension of the Airport.

Management and Approval works will be carried out based on the Preliminary Project by the SEAM, ESSAP, ANDE.

In the Project Development stage:

- Detailed architectural design;
- Structural and facilities design;
- General technical-artistic, descriptive and justifying memory;
- Technical specifications;
- Metrics and budget form;
- Scope and description of the works; and General data necessary for the elaboration of the list of bases and conditions corresponding to the call to construction of the works.



48. EXECUTIVE PROJECT FOR THE CIVIL AND ROAD WORKS OF STATIONS OF TOLL

Contractor: M & T S.A.

Contract: Executive Project for the Road Works of 9 Tolling Stations in the Eastern Region

Contract amount: 87,554,875 Gs.

Period: 2013

DESCRIPTION OF THE WORK:

- Topographic Studies.
- Design and structural calculation.
- Pavement of H°A°.
- Slopes design.
- Design of Pluvial Drainage.
- Signaling
- Computation
- Advice During the Execution of the Work.
- Management of Project Approval.
- Soil Studies.
- Transit Studies.

49. CONSULTING SERVICE

Contractor: PETROPAR

Contract: Central springs and dolphins for fuel unloading.

Contract amount: US \$. 850,000

Period: 1998

DESCRIPTION OF THE WORK:

H° A° quay with deep foundation of pre-fabricated piles and piles in situ. Bases for fuel pipelines. Protective embankment with protected slopes. Access bridge and embankment for roads. Paved access to the pier. Extension of 400 meters in length of medium voltage power lines and installation of the transformer station with 300 kVA of power.



49. CONSULTING SERVICE

Contractor: PETROPAR

Contract: South Docks and Dolines for Fuel Unloading.

Contract amount: US \$. 850,000

Period: 1996

DESCRIPTION OF THE WORK:

H° A° quay with deep foundation of pre-fabricated piles and piles in situ. Bases for fuel pipelines. Protective embankment with protected slopes. Access bridge and embankment for roads. Paved access to the pier. Extension of 400 meters in length of medium voltage power lines and installation of the transformer station with 300 kVA of power.



49. CONSULTING SERVICE

Contractor: ITAIPU BINACIONAL
Contract: FOR THE DEVELOPMENT OF PERU AVENUE FROM ROUTE 7 UNTIL ITS INTERSECTION WITH THE SUPERCARRETERA L = 10 KM
Contract amount: 448,320,000 Gs
Period: 2014

DESCRIPTION OF THE WORK:

Preparation of the executive projects for the construction of the avenue.
Works of Management and Approval were carried out based on the Draft by the SEAM.

In the Project Development stage:

- Planning and Programming
- Technical Feasibility Study, Environment and Final Design of Preliminary Engineering
- Technical feasibility study, environment and final design of final engineering

CONSULTANCY SERVICE FOR THE SUPERVISION OF DRINKING WATER SUPPLY SYSTEMS IN 21 RURAL COMMUNITIES

Contractor: MINISTRY OF PUBLIC HEALTH AND SOCIAL WELFARE

Contract amount: 1.620.000.000 guaranies

Period: YEAR 2016-2017

Consortium: IT

CONSULTANCY SERVICE FOR THE PREPARATION OF ENGINEERING DESIGN OF H^a A^a BRIDGES IN THE WESTERN REGION

Contractor: MINISTRY OF PUBLIC WORKS AND COMMUNICATIONS

Contract amount: 849.000.000 guaranies

Period: YEAR 2016-2017

Consortium: IT

NATIONAL PUBLIC TENDER OF CONSULTING FIRMS FOR ELABORATION OF ENGINEERING STUDY FOR REHABILITATION PROJECT OF CROSSING KIMEX - FRUTIKA

Contractor: MINISTRY OF PUBLIC WORKS AND COMMUNICATIONS

Contract amount: 1.028.631.504 guaranies

Period: YEAR 2019-2020

Consortium: IT

CONSULTING SERVICES FOR THE ELABORATION OF THE FINAL DESIGN OF ENGINEERING OF BRIDGES OF H^a A^a IN THE DEPARTMENTS OF CAAGUAZU, ALTO PARANA, AND CANINDEYU

Contractor: MINISTRY OF PUBLIC WORKS AND COMMUNICATIONS

Contract amount: 1.938.685.100 guaranies

Period: YEAR 2015-2016

Consortium: ICTR

National Public Tender for Prequalified Consulting Firms for the Supervision of Rehabilitation Works for the Clean Section Km 21 - Calle 6000 Km 173

Contractor: MINISTRY OF PUBLIC WORKS AND COMMUNICATIONS

Contract amount: 25.000.000.000 guaranies

Period: YEAR 2015-2022

Consortium: ICTR

CONSULTANCY SERVICE OF PREQUALIFIED SIGNATURES FOR THE DEVELOPMENT OF ENGINEERING STUDIES OF VICENTE ROADS IN DEPARTMENTS OF THE EASTERN REGION

Contractor: MINISTRY OF PUBLIC WORKS AND COMMUNICATIONS

Contract amount: 2.384.777.000 guaranies

Period: YEAR 2015-2017

Consortium: TCI

PROJECT AUDIT SERVICES: CIVIL CONSTRUCTION, MECHANICAL ASSEMBLY, ELECTRICAL, INSTRUMENTATION AND EQUIPMENT CONTROL FOR OVEN OPTOMIZATION PROJECTS OF CLINKER III OF THE VALLEMI INSDUSTRIAL PLANT

Contractor: NATIONAL CEMENT INDUSTRY

Contract amount: 5.999.600.000 guaranies
Period: YEAR 2016-2017
Consortium: Vallemi

PROJECT AUDIT SERVICES: PCS AND CLINKER PRODUCTION LINE COMMISSIONING "OF THE INDUSTRIAL PLANT VALLEMI, OF THE CEMENT NATIONAL INDUSTRY

Contractor: NATIONAL CEMENT INDUSTRY

Contract amount: 1.290.320.000 guaranies
Period: YEAR 2017-2018
Consortium: CIK

AUDIT OF WORKS AND SOCIAL WORK WITHIN THE FRAMEWORK OF THE CHE TAPYI PROJECT - FOURTH STAGE

Contractor: NATIONAL SECRETARIAT OF HOUSING AND HABITAT

Contract amount: 1.003.054.286 guaranies
Period: YEAR 2017-2018
Consortium: Ygatimi

RECRUITMENT OF CONSULTING FIRMS FOR THE SUPERVISION OF CONSTRUCTION WORKS, EXTENSION AND REPAIR OF EDUCATIONAL ESTABLISHMENTS WITHIN THE FRAMEWORK OF THE PROJECTS FINANCED BY FEEI - PLURIANUAL - 2016-2017 "LOTE NUMERO 5. GUAIRA

Contractor: MINISTRY OF EDUCATION AND SCIENCE

Contract amount: 1.355.400.000 guaranies
Period: YEAR 2017-2018
Consortium: Ygatimi

RECRUITMENT OF CONSULTING FIRMS FOR THE SUPERVISION OF CONSTRUCTION WORKS, EXTENSION AND REPAIR OF EDUCATIONAL ESTABLISHMENTS WITHIN THE FRAMEWORK OF THE PROJECTS FINANCED BY FEEI - PLURIANUAL - 2016-2017 "LOTE NUMERO 11. PARAGUARI

Contractor: MINISTRY OF EDUCATION AND SCIENCE

Contract amount: 1.298.160.000 guaranies
Period: YEAR 2017-2018
Consortium: Ygatimi



AREAS OF ACTIVITY

ECONOMY

Investment projects.
Market studies.
Feasibility Studies.

Administrative Organization and Control Projects.

ENGINEERING

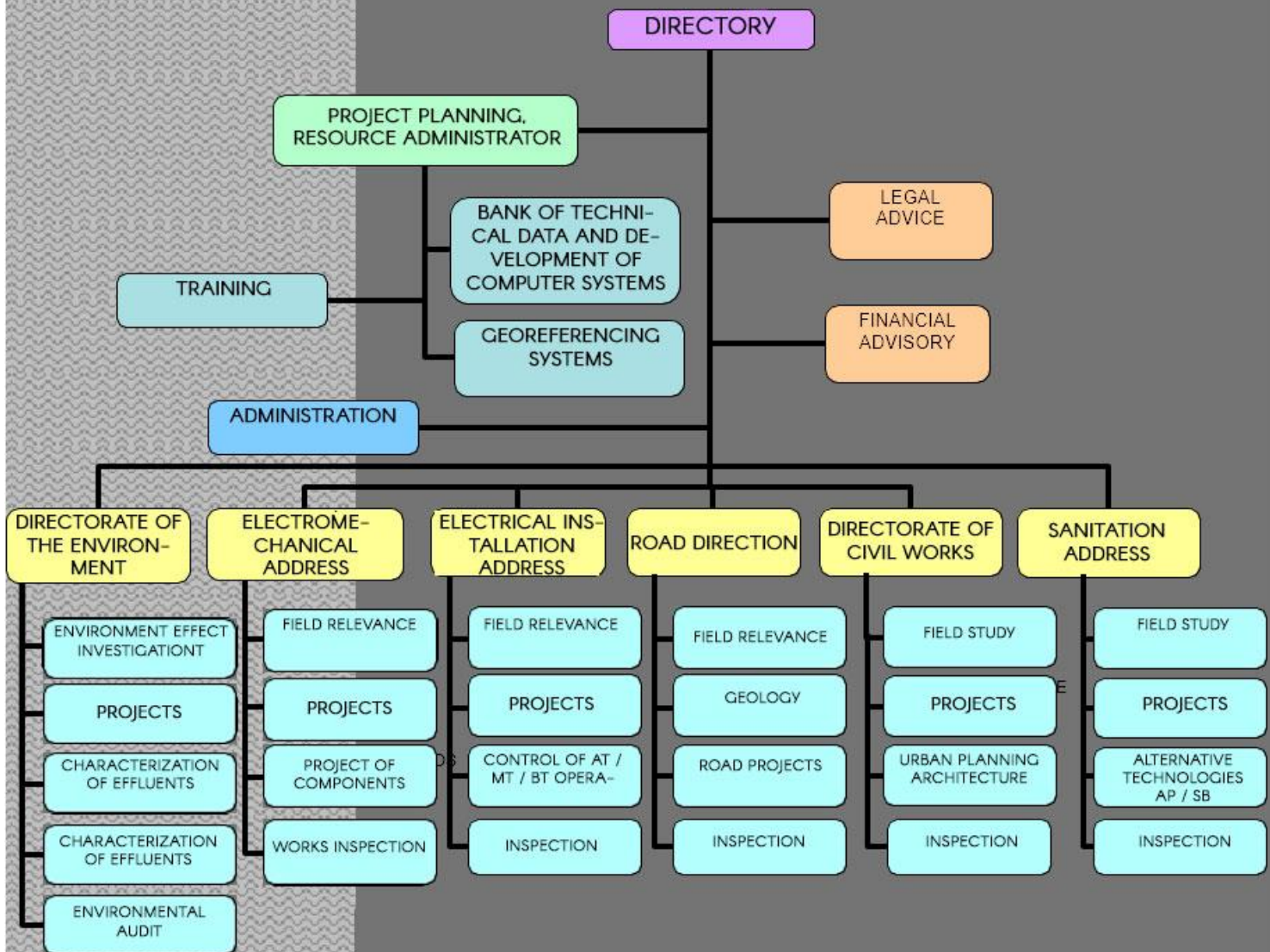
Projects and studies of civil works.
Projects and studies of hydraulic works.
Projects and studies of electromechanical Inst.
Projects and studies of industrial works.
Projects and studies of sanitary works.
Cement study.
Projects of defense works against floods.
Inspection of Works.

ARCHITECTURE AND URBAN PLANNING

Project of housing complexes.
Urban planification.
Project of airports and ports.
Development and implementation of a computer system for the management of hydrometric and demographic data banks, associated with GIS (Geographic Information System)

ORGANIZATION CHART

OF THE COMPANY



WORK PICTURE

SUMMARY OF EXECUTED SERVICES

DENOMINATION	SERVICES REALIZED	COMMITTEE	YEAR	AMOUNT IN U \$S	SPECIALTY	COUNTRY	OBS.
HYDROELECTRIC YACYRETÁ	PROJECT DETAIL AND WORK PROSECUTION	BANKING ENTITY YACYRETÁ	1979/2003	250.000.000	ING. CIVIL ING. ELECTROMECHANICAL ARCHITECTURE ING. SANITARY	PARAGUAY	CONSORTIUM ETIC (INTEC 25%)
ARM AÑA CUÁ HYDROELECTRIC POWER PLANT	FEASIBILITY STUDIES AND EXECUTIVE AND DETAIL PROJECT	BANKING ENTITY YACYRETÁ	1999/2002	5.237.774	ING. CIVIL ING. ELECTROMECHANICA GEO	PARAGUAY	CONSORTIU INTEC S.A. - ICASA
FISCALIZATION OF PAVING WORKS FISCALIZATION OF THE CONSTRUCTION OF PAVING WORKS IN THE ROAD NETWORK PACKAGE 3	FISCALIZATION OF THE CONSTRUCTION OF PAVING WORKS IN THE ROAD NETWORK PACKAGE 3	MINISTRY OF PUBLIC WORKS AND COMMUNICATIONS	2012	1.694.600	ING. ROAD ING. HYDRAULICS. STRUCTURES. SPECIALIST IN GEOLOGY	PARAGUAY	CONSORTIU INTEC S.A. - ICASA
PUERTO FLUVIAL DE INCARNACIÓN	EXECUTIVE PROJECT	BANKING ENTITY YACYRETÁ	1979	1.600.000	ING. PORTS ING. CIVIL ING. HYDRAULIC ING. GEOTECHNICAL HYDROLOGY	PARAGUAY	CONSORTIUM ETIC (INTEC 25%)
STRATEGIC PLAN FOR LIFTING OF PACKAGING AT DEFINITIVE PROJECT LEVEL - PEY	STRATEGIC PLAN FOR LIFTING OF PACKAGING AT DEFINITIVE PROJECT LEVEL - PEY	BANKING ENTITY YACYRETÁ	2001/2003	1.504.068	ING. CIVIL. ING. ROAD ING. SANITARY. STRUCTURE. ING. ELECTROMECHANICAL	PARAGUAY	CONSORTIUM ETIC
SUPERVISION OF THE EXECUTIVE PROJECT AND CONSTRUCTION OF THE STORAGE PLANT AND GLP RECEPTION WORKS IN THE INDUSTRIAL PLANT OF VILLA ELISA	SUPERVISION OF THE ENGINEERING PROJECT AND THE SUPPLY OF GOODS AND THE EXECUTION OF THE WORK	PETROPAR PETRÓLEOS PARAGUAYOS	1994/96	1.260.529	ING. CIVIL ING. ELECTRO-MECANICA ING. CHEMICAL ING. MECANICA ING. GEOTECNICA ING. METALLURGICAL	PARAGUAY	CONSORTIU INTEC SRL M (50%) - ELECTROMON S. A.
RELOCATION OF THE RAILROAD	EXECUTIVE PROJECT	BANKING ENTITY YACYRETÁ	1976/78	1.200.000	ING. FINANCIERA ING. CIVIL ING. SANITARIA ING. ELECTRO-MECANICA ARQUITECTURA	PARAGUAY	CONSORTIUM ETIC
PROJECT RAILWAY STATION OF INCARNATION CHARGES	EXECUTIVE PROJECT	BINATIONAL ENTITY YACYRETÁ	1979/80	100.000	ING. FINANCIERA ING. CIVIL ING. SANITARIA ING. ELECTRO-MECANICA	PARAGUAY	CONSORTIUM ETIC

SUMMARY OF EXECUTED SERVICES

DENOMINATION	SERVICES REALIZED	COMMITTEE	YEAR	AMOUNT IN U \$	SPECIALTY	COUNTRY	OBS.
					ARCHITECTURE		
PACU CUA RAILWAY BORDER CONTROL PROJECT	PROYECTO EJECUTIVO	BANKING ENTITY YACYRETÁ	1980/81	100.000	ING. FINANCIERA ING. CIVIL ING. SANITARIA ING. ELECTROMECHANICAL ARCHITECTURE	PARAGUAY	CONSORTIUM ETIC
PERMANENT VILLA INFRASTRUCTURE	EXECUTIVE PROJECT AND AUDIT OF THE WORKS	BANKING ENTITY YACYRETÁ	1975/76	1.135.000	ING. CIVIL ING. SANITARIA ING. ELECTROMECHANICAL ING. ELECTRIC	PARAGUAY	CONSORTIUM CEPAY A
INCARNATION AIRPORT	EXECUTIVE PROJECT	BANKING ENTITY YACYRETÁ	1979	960.000	ING. AERONAUTICS ING. CIVIL ING. ELECTROMECHANICA ARQUITECTURA ING. SANITARY	PARAGUAY	CONSORTIUM ETIC (INTEC 25%)
VILLA PERMANENTE	WORKS INSPECTION	BANKING ENTITY YACYRETÁ	1982	950.000	ING. CIVIL ING. SANITARIA ING. ELECTROMECHANICA ING. ELECTRICA	PARAGUAY	CONSORTIUM ARPAY A
SUPERVISION OF THE EXECUTIVE PROJECT AND CONSTRUCTION OF THE LPG STORAGE PLANT IN VILLA ELISA INDUSTRIAL PLANTS AND HERNANDARIES	SUPERVISION OF THE ENGINEERING PROJECT AND THE SUPPLY OF GOODS AND THE EXECUTION OF THE WORK	PETROPAR PETRÓLEOS PARAGUAYOS	1996/98	800.000	ING. CIVIL ING. ELECTROMECHANICA ING. CHEMICAL ING. MECANICA ING. GEOTECNICA ING. METALLURGICAL	PARAGUAY	CONSORTIU INTEC SRL M (50%) - ELECTROMON S. A.
CONSULTING SERVICES FOR THE DEVELOPMENT OF THE PROJECT OF THE FUTURE HEADQUARTERS OF THE FACULTY OF MEDICAL SCIENCES	CONSULTING SERVICES FOR THE DEVELOPMENT OF THE PROJECT OF THE FUTURE HEADQUARTERS OF THE FACULTY OF MEDICAL SCIENCES	FACULTY OF MEDICAL SCIENCES	2012	573.400	ARCHITECTURE - ELECTRICAL SANITARY INSTALLATIONS ELECTROMECHANICA L PREVENTION AGAINST FIRE STRUCTURES SEÑALÉTICA	PARAGUAY	CONSORTIU M INKAP
WORKS OF THE ARROYO BASIN TACUARY REVISION AND UPDATING OF THE PROJECTS PROVIDED BY EBY IN CARMEN DEL PARANA	REVIEW AND UPDATING OF THE PROJECTS PROVIDED BY EBY IN CARMEN DEL PARANÁ	YACYRETA BINATIONAL ENTITY	2001/2003	538.667	ARCHITECTURE ROAD ENGINEERING FACILITIES CIVIL ENGINEERING	PARAGUAY	CONSORTIUM ETIC
CONSULTING SERVICES FOR THE REALIZATION OF ENGINEERING STUDIES OF THE SECTION: SAN PEDRO- PIRIPUCU- POTRERO NARANJA- PUNTA RIEL AND ACCESS TO PUERTO YBAPOVO	FEASIBILITY STUDIES, ROAD DESIGN	M.O.P.C	NOVIEMBRE 2012 - SETIEMBRE 2013	390.072	ING. ROAD STRUCTURE. ENVIRONMENTAL STUDIES. INST. SANITARY. INST. ELECTRIC	PARAGUAY	CONSORTIUM PUNTA RIEL

SUMMARY OF EXECUTED SERVICES

DENOMINATION	SERVICES REALIZED	COMMITTEE	YEAR	AMOUNT IN U\$S	SPECIALTY	COUNTRY	OBS.
RECRUITMENT OF CONSULTANCY SERVICES FOR THE DEVELOPMENT OF EXPANSION OF AIRPORT INFRASTRUCTURE-AISP	PROJECT OF ARCHITECTURE DEVELOPMENT OF EXECUTIVE PROJECT, STRUCTURE AND FACILITIES	DINAC	APRIL 2012 - NOVEMBER 2012	334.111	ARCHITECTURE. ELECTRIC INST. SANITARY. P.C.I. ENVIRONMENTAL STRUCTURE. INST. SEÑALÉTICA	PARAGUAY	CONSORTIUM INKAP
DEFENSE AGAINST FLOODING OF LOCALITIES OF THE HIGH PARAGUAY AND PRESIDENT HAYES	CONSULTING SERVICES FOR THE ENGINEERING STUDIES FOR THE DEFENSE AGAINST FLOODING OF LOCALITIES OF THE HIGH PARAGUAY AND PRESIDENT HAYES	S.E.N.	2011	250.000	ING. CIVIL. ING. ELECTROMECHANICAL	PARAGUAY	INTEC S.A.
ELABORATION OF THE ENGINEERING STUDY FOR THE EMPTY TYPE PAVING OF THE SECTIONS: PACKAGE 2: YABEBYRY - SANTA RITA	ENGINEERING STUDY FOR EMPLOYED TYPE PAVING	M.O.P.C.	2011	240.350	ING. ROAD STRUCTURE. ENVIRONMENTAL STUDIES. INST. SANITARY. INST. ELECTRIC	PARAGUAY	CONSORTIU M PUNTA RIEL (GEOCON - INTEC - OCSA)
DEFENSE AGAINST FLOODING - RIO PARAGUAY OF THE CITIES: PILAR CONCEPCIÓN PUERTO ANTEQUERA	EXECUTIVE PROJECT	INSTITUTE OF MUNICIPAL DEVELOPMENT - IDM CONSORTIUM ARCHITECTURE ENGINEERING AND ASSOCIATES	1987	230.000	ING. CIVIL ING. VIAL GEOLOGÍA ING. HYDRAULIC ING. ELECTRIC	PARAGUAY	INTEC SRL - 100%
FOURTH RURAL PROJECT OF WATER SUPPLY AND SANITATION LOAN NUMBER: 4222-PA And 4223-PA	CONSULTING SERVICES: AUDIT OF WORKS OF DRINKING WATER SUPPLY SYSTEMS IN 48 LOCATIONS	SENASA	2006	222.749	CIVIL ENGINEERS, ELECTROMECHANICAL HYDRAULICS, GEOLOGISTS, CHEMICALS	PARAGUAY	INTEC S.A.
ESTACION DE PASAJEROS DE FRAN		YACYRETA BINATIONAL ENTITY	1978/1979	200.000	ING. FINANCIERA ING. CIVIL ING. SANITARIA ING. ELECTROMECHANICAL ARCHITECTURE	PARAGUAY	CONSORTIUM ETIC
INDUSTRIAL PLANT OF ABSOLUTE ALCOHOL	LEGAL ADVICE	APAL MONITOR S.A.	1981	160.000	ING. CIVIL ING. VIAL ING. ELECTROMECHANICAL ING. SANITARY	PARAGUAY	ASSOCIATED WITH CONSULTOR MONITOR S.R.L.
ELABORATION OF VARIOUS ENGINEERING STUDIES	FEASIBILITY STUDIES, ROAD DESIGN	M.O.P.C	DECEMBER 2012 - AUGUST 2013	155.500	ING. ROAD STRUCTURE. ENVIRONMENTAL STUDIES. INST.	PARAGUAY	CONSORTIUM GEOCON - INTEC

SUMMARY OF EXECUTED SERVICES

DENOMINATION	SERVICES REALIZED	COMMITTEE	YEAR	AMOUNT IN U\$	SPECIALTY	COUNTRY	OBS.
STREETS OF NEIGHBORHOOD ROADS OF THE REGION ORIENTAL-AD REFERENDUM TO THE FINANCIAL PLAN, PACKAGE 5.					SANITARY. INST. ELECTRIC		
GEOTECHNICAL STUDIES	GEOTECHNICAL STUDIES...	BINATIONAL ENTITY ITAIPU	1969/72	150.000	ING. GEOTECHNICAL	PARAGUAY	CONSORTIUM GEOTECNICA S.A.
FISCALIZATION OF CONSTRUCTION OF DRINKING WATER SUPPLY SYSTEMS FOR RURAL SETTLEMENTS	AUDIT INSPECTION OF WELLS, METALLIC ELEVATED TANKS MOTOR-COMPRESSORS ELECTRO-PUMPS 27 ADVICE	SENASA NATIONAL SERVICE OF ENVIRONMENTAL SANITATION	1996/97	145.650	ING. CIVIL ING. ELECTROMECHANICAL HYDROLOGY	PARAGUAY	INTEC SRL
SERVICE OF AUDIT OF WORKS OF THE CONSTRUCTION OF THE LIBRARY AND CENTRAL ARCHIVE OF THE NATIONAL CONGRESS	FISCALIZATION OF WORKS OF THE CONSTRUCTION OF THE LIBRARY AND CENTRAL ARCHIVE OF THE NATIONAL CONGRESS	NATIONAL CONGRESS	2011	123.192	ING. CIVIL. ENVIRONMENTAL. ARCHITECTURE. INST. ELECTRIC INST. SANITARY	PARAGUAY	INTEC S.A.
ELABORATION OF ENGINEERING DESIGN FOR PAVING ASPHALT	ELABORATION OF THE FINAL DESIGN OF ENGINEERING FOR THE ASPHALTIC PAVING OF THE CURUGUATY SECTION - VILLA YGATIMI - YPE JHU	M.O.P.C.	2011	115.540	ING. ROAD STRUCTURE. ENVIRONMENTAL STUDIES. INST. SANITARY. INST. ELECTRIC	PARAGUAY	CONSORTIUM PUNTA RIEL (GEOCON - INTEC - OCSA)
ENGINEERING PROJECT FINAL DESIGN OF PAVING ENGINEERING ASPHALT OF THE SECTION "CURUGUATY - VILLA YGATIMI - YPE JHU"	FINAL DESIGN OF ENGINEERING FOR ASPHALTIC PAVING OF THE SECTION "CURUGUATY - VILLA YGATIMI - YPE JHU"	MINISTERIO DE OBRAS PUBLICAS Y COMUNICACIONES	2011-2012	115.540	ING. VIAL STRUCTURE. ENVIRONMENTAL STUDIES. INST ELECTRIC	PARAGUAY	CONSORTIUM PUNTA RIEL
MIXING FERTILIZER PLANT	ASSISTANCE TO THE MIXER PLANT PROJECT	MINISTRY OF AGRICULTURE AND LIVESTOCK	1990/91	98.000	ING. CIVIL ING. ELECTROMECHANICAL ING. ELECTRIC	PARAGUAY	INTEC SRL - 100%
FOURTH RURAL PROJECT OF WATER SUPPLY AND SANITATION LOAN NUMBER: 4222-PA And 4223-PA	CONSULTING SERVICES: SUPERVISION OF THE CONSTRUCTION OF THE INTEGRATED SYSTEM OF DRINKING WATER SUPPLY WITH PARTICIPATION OF THE SECTOR PRIVATE FOR NANAWA, PUERTO FALCÓN, BETERETE CUÉ AND CHACO Í.	SENASA	2004 / 2005	96.000	SANITARY, CIVILIAN ENGINEERS, HYDRAULICS, ELECTROMECHANICAL S, GEOLOGISTS, CHEMICALS, SURVEYORS	PARAGUAY	INTEC S.A.

RESUMEN DE SERVICIOS EJECUTADOS

DENOMINATION	SERVICES REALIZED	COMMITTEE	YEAR	AMOUNT IN U\$S	SPECIALTY	COUNTRY	OBS.
PLANNING OF QUALITY CONTROL WORK FOR THE EXECUTION OF WORKS OF THE AREA'S POTABLE WATER SUPPLY SYSTEM METROPOLITAN ASSUMPTION	QUALITY CONTROL TANKS 8000 M3 AND 3000 M3 FOUNDATIONS REINFORCED CONCRETE HYDRAULIC AND ELECTROMECHANICAL EQUIPMENT OPERATING CONTROL COMPONENTS...	CORPOSANA CONSORTIUM DE - CONSTRUCTION COMPANIES	1992-93	82.000	ING. CIVIL ING. HYDRAULIC ING. GEOTECNICA ING. ELECTROMECHANICAL	PARAGUAY	INTEC SRL - 100%
PLANTS OF TREATMENT FOR DRINKING WATER TO ELIMINATE IRON AND MANGANESE	EXECUTIVE PROJECT FOR 19 LOCALITIES ELECTROMECHANICAL REINFORCED CONCRETE STUDIES OF LABORATORIES	KAPPA SRL	1994/95	80.000	ING. CIVIL ING. ELECTROMECHANICA ING. CHEMICAL ING. MECHANICS	PARAGUAY	INTEC SRL
DRINKING WATER IN DEPARTMENT OF FRONTIERS FONPLATA PAR 11/93	DESIGNS OF DRINKING WATER SYSTEMS 9 LOCALITIES WITH DEEP WELL 6 LOCALITIES WITH PLANT OF TREATMENT	SENASA NATIONAL SERVICE OF ENVIRONMENTAL SANITATION	2000	62.000	ING. CIVIL ING. ELECTROMECHANICA ING. ELECTRIC ING. CHEMISTRY.	PARAGUAY	INTEC SRL
EXECUTIVE PROJECT AND STUDY OF FEASIBILITY OF FINANCING OF THE SANITARY SEWER SYSTEM OF ITÁ	DESIGN OF THE SANITARY SYSTEM OF HE LOCATION OF ITÁ STUDY OF FEASIBILITY OF FINANCING	CONSORTIUM OF CIVIL HYDRAULIC CONSTRUCTIONS	1996	17.000	ING. SANITARIA ING. ELECTRO-MECANICA ING. GEOTECNICA FINANCIERA LEGAL	PARAGUAY	INTEC SRL
RECRUITMENT OF CONSULTANCY SERVICES FOR THE PREPARATION OF THE EXECUTIVE PROJECT OF THE SEDE DE LA DINAC BUILDING	DEVELOPMENT OF EXECUTIVE PROJECT OF ARCHITECTURE, STRUCTURES AND FACILITIES	NATIONAL AERONAUTICAL CIVIL ADDRESS	2013	210.343	ARCHITECTURE - ELECTRICAL INSTALLATION - SANITARY -PCI- STRUCTURES	PARAGUAY	CONSORTIUM INKAP INTEC S.A. KAPPA S.A.

SUMMARY OF EXECUTED SERVICES

DENOMINATION	SERVICES REALIZED	COMMITTEE	YEAR	AMOUNT IN U\$S	SPECIALTY	COUNTRY	OBS.
DRAFT EXECUTIVE FOR CIVIL WORKS OF 9 TOLERANT STATION IN THE REGION ORIENTAL OF PARAGUAY	TOPOGRAPHIC STUDIES ROAD DESIGN AND STRUCTURAL CALCULATION H°A° PAVING OF SLOPE DESIGN - DESIGN OF PLUVIAL DRAINING - SIGNS - COMPUTES - ADVICE DURING THE EXECUTION OF THE WORK - APPROVAL MANAGEMENT OF THE PROJECT - SOIL STUDIES - TRAINING STUDIES...	M&T S.A.	2013	19.898	ARCHITECTURE-DESIGN	PARAGUAY	INTEC
DEVELOPMENT EXECUTIVE PROJECT, QUALITY CONTROL AND AUDIT OF CABLING FOR MOUNTING OF AERIAL AND UNDERGROUND TELEPHONE NETWORKS FOR THE EXPANSION AND READECUATION OF THE WECAFC PLANT	DEVELOPMENT OF THE EXECUTIVE PROJECT, QUALITY CONTROL AND AUDIT OF THE ASSEMBLY OF NETWORKS AND UNDERGROUND FOR THE EXTREME PLANT EXPLOITATION AND REPAIR OF S.A. IN SEVERAL CENTRAL INTERIOR OF THE COUNTRY. 49 (CENTER) CENTRAL BARRIOOBRERO. TOTALIZING A TOTAL OF 66,000 MTS. OF DESIGNED	CONSORTIU M REDTEL	2007	114.571	DEVELOPMENT OF THE EXECUTIVE PROJECT, QUALITY CONTROL AND SUPERVISION	PARAGUAY	INTEC

SUMMARY OF EXECUTED SERVICES

DENOMINATION	SERVICES REALIZED	COMMITTEE	YEAR	AMOUNT IN U\$	SPECIALTY	COUNTRY	OBS.
DEVELOPMENT EXECUTIVE PROJECT, WORK MANAGEMENT AND QUALITY CONTROL FOR THE CONSTRUCTION OF THE PORT TERMINAL OF FUEL FOR THE SOUTH PIER	DESIGN OF THE PROJECT DEVELOPMENT OF THE EXECUTIVE PROJECT CONSTRUCTION MANAGEMENT. QUALITY CONTROL FOR THE CONSTRUCTION OF A PORT PORT OF FUEL, WITH ITS WAYS OF ACCESS TO THE PETROPAR PLANT, IN VILLA ELISA.	CONSORTIUM M&T CONSTRCCION-ISACIO VALLEJO	2002	150.862.06	DEVELOPMENT EXECUTIVE PROJECT, CONSTRUCTION MANAGEMENT AND QUALITY CONTROL	PARAGUAY	INTEC
EXECUTIVE PROJECT, WORK MANAGEMENT AND QUALITY CONTROL FOR THE CONSTRUCTION OF THE PORT TERMINAL OF FUEL FOR THE SOUTH PIER	DESIGN OF THE PROJECT DEVELOPMENT OF THE EXECUTIVE PROJECT QUALITY CONTROL FOR THE CONSTRUCTION OF A PORT FUEL TERMINAL, WITH ITS WAYS OF ACCESS PETROPAR PLANT, IN VILLA ELISA.	CONSORTIUM M&T CONSTRCCION-ISACIO VALLEJO	2002-2003	163.793.10	DEVELOPMENT EXECUTIVE PROJECT, CONSTRUCTION MANAGEMENT AND QUALITY CONTROL	PARAGUAY	INTEC

SUMMARY OF EXECUTED SERVICES

DENOMINATION	SERVICES REALIZED	COMMITTEE	YEAR	AMOUNT IN U\$S	SPECIALTY	COUNTRY	OBS.
PROMOTION AND DISTRIBUTION OF MATERIALS FOR THE CONSTRUCTION OF 5,268. SANITARY LETTERS	PROMOTION AND COMMUNITY TRAINING. MODEL OF INTERINSTITUTIONAL MANAGEMENT INTEGRATED WITH AUTHORITIES, REFERENTS OF THE ORGANIZED CIVIL SOCIETY AND TECHNICIANS OF THE CONSULTANT DISSEMINATION OF THE PROMOTION CAMPAIGN BY THE MEDIA COMMUNITY EDUCATION IN THEME OF PREVENTIVE HEALTH AND CONSTRUCTION AND USE OF THE LETRINES	SENASA	2008/2009	US\$ 627.880 PARTICIPACIÓN INTEC S.A US\$ 722.062.750	PROMOTION AND COMMUNITY TRAINING	PARAGUAY	INTEC
COMPREHENSIVE MANAGEMENT - REVISION AND FINAL DESIGNS FOR THE CONSTRUCTION OF THE PROJECT AND ELABORATION OF THE PLANES OF THE ENGINEERING DETAIL OF THE WORK: "REHABILITATION AND PAVING OF THE WALKWAY SECTION: PARAGUARI - TEBICUARY". (59 KM)	TOPOGRAPHIC STUDIES GEOTECHNICAL AND GEOLOGICAL STUDIES HYDRAULIC AND HYDROLOGICAL. DISEÑO GEOMÉTRICO DE SEÑO DE PAVIMENTO DESIGN OF DRAWINGS AND WORKS OF ART. DESIGN OF COMPLEMENTARY WORKS METRIC COMPUTE AND BUDGET TECHNICAL SPECIFICATIONS CONSTRUCTIVAS, ENVIRONMENTAL AND SPECIAL ENVIRONMENTAL STUDIES ESTUDIO DE TRANSITO MAINTENANCE AND STUDY ECONOMIC EVALUATION SYSTEM OF GEOREFERENCED INFORMATION.	CONSORTIUM INGENIERIA VIAL	2004/2011	1.250.000.000 GS	ENGINEERING STUDIES ROAD DESIGN ENVIRONMENTAL STUDIES	PARAGUAY	INTEC
REVIEW OF THE PROJECT AND DEVELOPMENT OF THE ENGINEERING PLANS OF DETAIL OF THE WORK: "REHABILITATION AND PAVING OF THE WALKWAY SECTION:	TOPOGRAPHIC STUDIES GEOTECHNICAL AND GEOLOGICAL STUDIES HYDRAULIC AND HYDROLOGICAL STUDIES, GEOMETRIC DESIGN	CONSORTIUM INGENIERIA VIAL	2004/2011	1.000.000.000 GS	ENGINEERING STUDIES ROAD DESIGN ENVIRONMENTAL STUDIES	PARAGUAY	INTEC

SUMMARY OF EXECUTED SERVICES

DENOMINATION	SERVICES REALIZED	COMMITTEE	YEAR	AMOUNT IN U\$	SPECIALTY	COUNTRY	OBS.
VILLARRICA-TEBICUARY-LA COLMENA (62 KM) ".	PAVEMENT DESIGN DESIGN OF DRAWINGS AND ART WORKS. WORKS DESIGN COMPLEMENTARY METRIC COMPUTER AND BUDGET CONSTRUCTION, ENVIRONMENTAL AND SPECIAL TECHNICAL SPECIFICATIONS ENVIRONMENTAL STUDIES STUDIES OF TRANSIT STUDY OF MAINTENANCE AND ECONOMIC REEVALUATION GEOREFERENCED INFORMATION SYSTEM.						
INTEGRAL MANAGEMENT OF THE INGENIERAL SERVICES OF THE PROJECT FOR THE ROAD WORKS IN THE REPUBLIC OF PARAGUAY CORRESPONDING TO THE PTY (PLAN OF ENVALSE) ETAPAI - PACKAGE A IN THE AREAS OF INFLUENCE OF THE ROUTES I AND VI.	PRELIMINARY STUDIES OF THE AREA OF THE PROJECTS INCLUDING REVIEW OF GEOLOGICAL, GEOTECHNICAL, HYDROLOGICAL STUDIES, ETC. FINAL DESIGN OF ENGINEERING OF ROAD PROJECTS WITH STRUCTURAL PACKAGE FOR A USEFUL LIFE OF 20 YEARS AND DEVELOPMENT OF THE DETAIL PROJECT OF THE FOLLOWING SECTIONS	CONSORTIU M COSTERO	2008	1430.000	ENGINEERING STUDY ROAD DESIGN DESIGN OF BRIDGES ENVIRONMENT CATASTRO	PARAGUAY	IINTEC

CONTRATOS EN EJECUCION

ITEM	INSTITUTION	Name and Number of the Call	Name of the CONSORTIUM	Rode
1	SENASA	SP 07/2015 FISCALIZATION OF DRINKING WATER SUPPLY SYSTEM AND SANITATION IN 21 RURAL COMMUNITIES GROUP 1,2 and 3 (200,000 Two hundred thousand Dollars)	CONSORTIUM IT	1.620.000.000
2	MOPC	CALL N° 73/15 LPN CONSULTANCY SERVICE OF PREQUALIFIED FIRMS FOR THE DEVELOPMENT OF ENGINEERING STUDIES OF SECTIONAL ROADS IN DEPARTMENTS OF THE EASTERN REGION	CONSORTIUM TCI	2.384.777.000
3	BNF SCC BID N° 01/2015	FC-SCC BID BNF N° 1/2015 "ADVISORY, DESIGN AND DEVELOPMENT OF EXECUTIVE PROJECT OF REMODELING OF WORKS OF CASA MATRIZ AND PERIPHERAL AGENCIES"	CONSORTIUM INKAP	296.190.560
4	MPSYBS SENASA	RECRUITMENT OF CONSULTING FIRMS FOR THE RELEVANCE, DIAGNOSIS AND EXECUTIVE PROJECT OF HEALTH ESTABLISHMENTS OF THE MSPYBS	CONSORTIUM INKAP	870.000.000
5	SENAVITAT	National Public Tender No. 22/2015 Inspection of social housing projects in rural settlements seeding	CONSORTIUM YGATIMI	810.000.000
6	SENAVITAT	LPN 002/2015 SELECTION OF PREQUALIFIED CONSULTING FIRMS FOR SOCIAL WORK AND SOCIAL WORK SERVICES IN THE FRAMEWORK OF THE CHE TAPYI PROJECT	CONSORTIUM YGATIMI	818.740.000
7	MOPC	MOPC LPN 13/15 SIGNED COMPANIES FOR THE SUPERVISION OF WORKS FOR REHABILITATION AND MAINTENANCE OF ROADS BY LEVELS OF SERVICES (CREAM), SECTION: CLEAN (KM 21) - CALLE 6000 (173KM)	CONSORTIUM ICTR	25.000.000.000
8	MOPC	SP MOPC N° 110/2014 CONSULTING SERVICES FOR THE DEVELOPMENT OF FINAL DESIGN OF BRIDGE ENGINEERING IN THE DEPARTMENTS OF CAAGUAZU - ALTO PARANA AND CANINDEYU- AD REFERENDUN TO THE PGN	CONSORTIUM ICTR	1.762.441.000
9	INC	INC No. 109/2015 PROJECT MONITORING SERVICES: CIVIL CONSTRUCTION, MECHANICAL ASSEMBLY, ELECTRICAL, INSTRUMENTATION AND EQUIPMENT CONTROL FOR THE CLINKER OVEN OPTOMIZATION PROJECTS OF THE VALLEMI INSDUSTRIAL PLANT, OF THE NATIONAL INSTITUTE OF CEMENT.	CONSORTIUM VALLEMI	5.999.600.000
10	MOPC	CALL MOPC N ° 02/2016 ID N° 302 368 NATIONAL PUBLIC TENDER HIRING OF CONSULTING SERVICES FOR THE PREPARATION OF THE FINAL DESIGN OF BRIDGE ENGINEERING OF H ° A ° IN THE WESTERN REGION	CONSORTIUM IT	1.856.000.000